

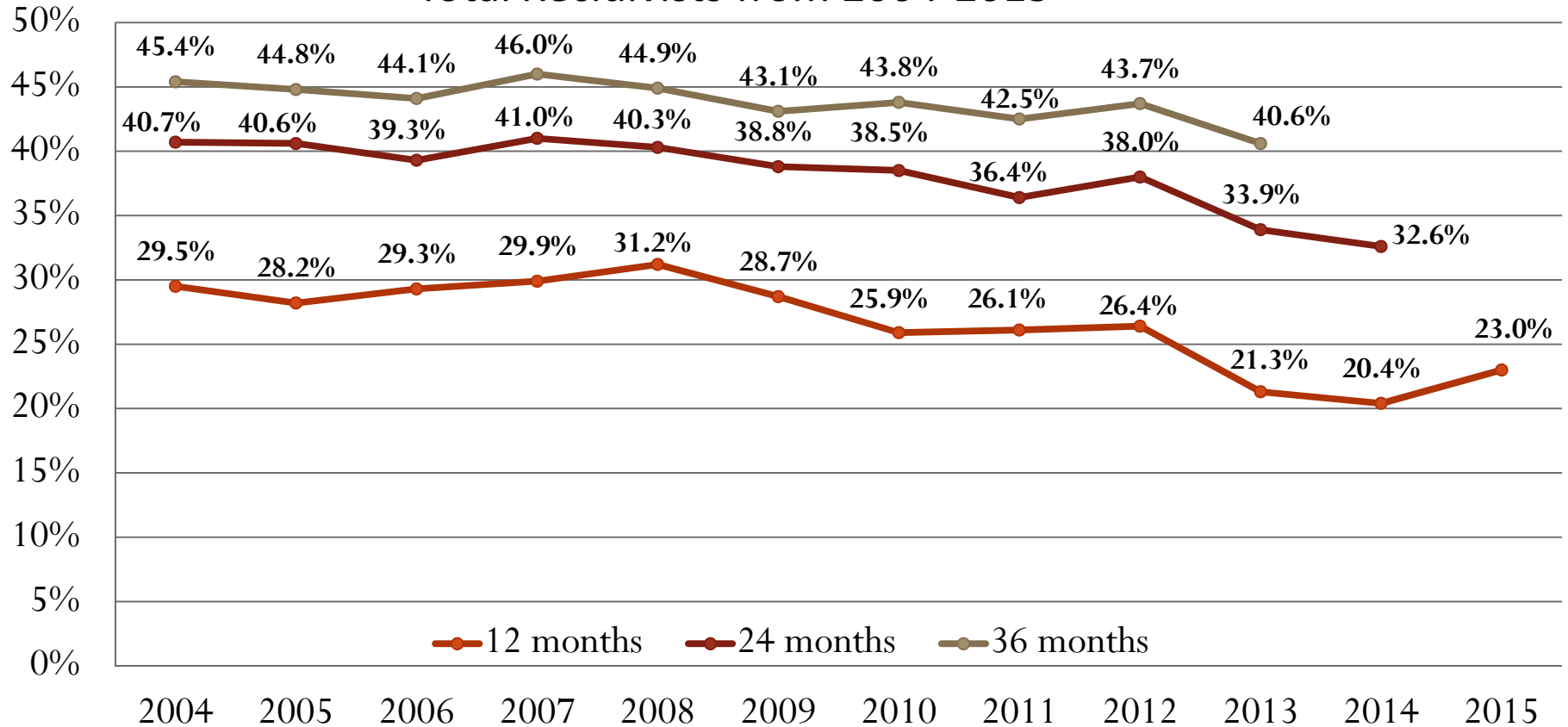
Adult Recidivism

Adult recidivism looks at the offender's status at the one-year, two-year, and three-year marks from their release from prison to supervision or discharge status.

Recidivists include any return to prison for a new felony conviction or for a revocation of parole or suspended sentence supervision.

Adult Recidivism Historical Summary

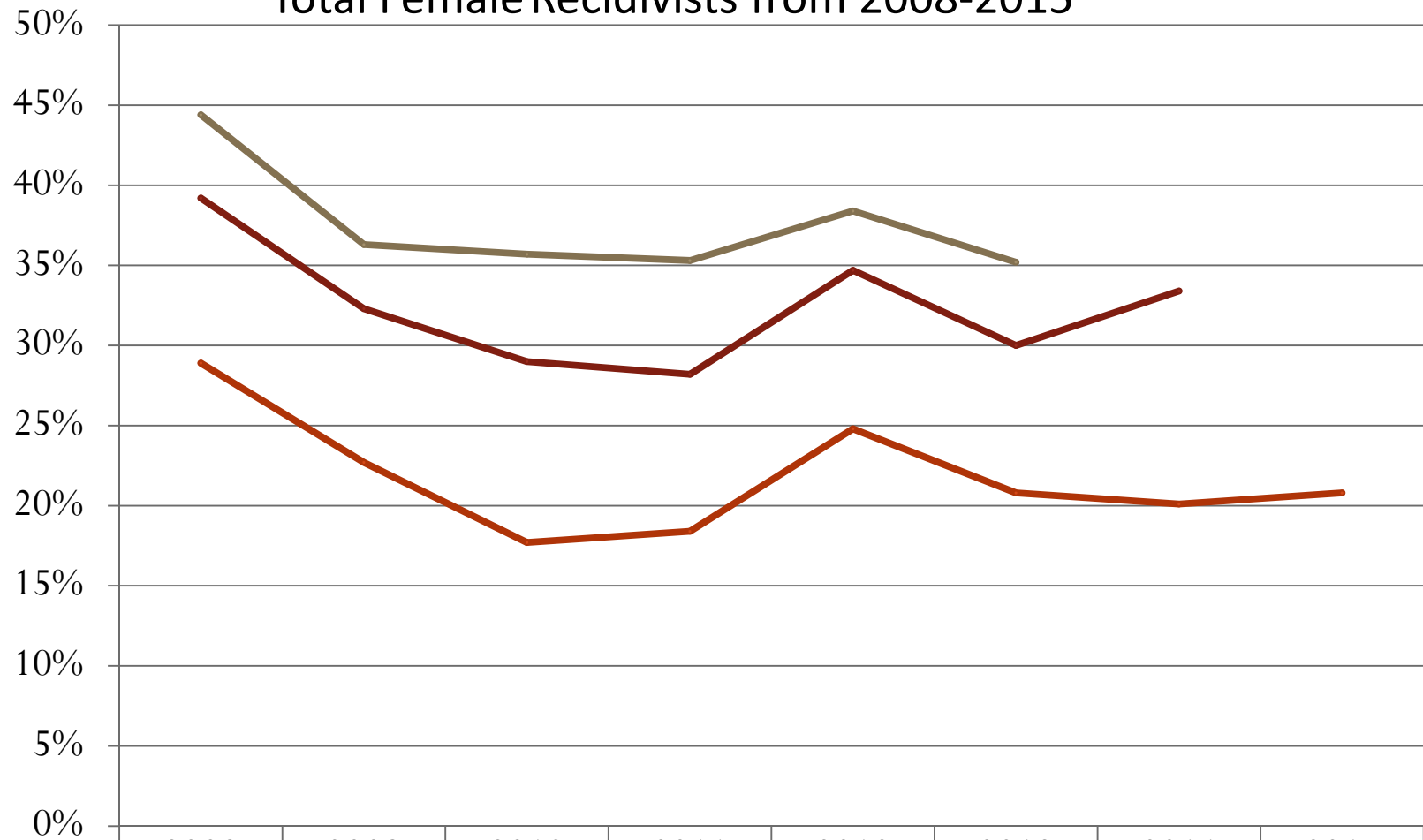
Total Recidivists from 2004-2015



12 months # of Recidivists/ # Released	599/2033	546/1933	633/2164	620/2072	628/2012	590/2058	501/1934	473/1815	505/1912	365/1715	369/1812	408/1775
24 months # of Recidivists/ # Released	827/2033	785/1933	850/2164	850/2072	811/2012	788/2058	745/1934	661/1815	727/1912	581/1715	590/1812	
36 months # of Recidivists/ # Released	924/2033	867/1933	954/2164	954/2072	904/2012	887/2058	848/1934	771/1815	835/1912	697/1715		

Female Recidivism Historical Summary

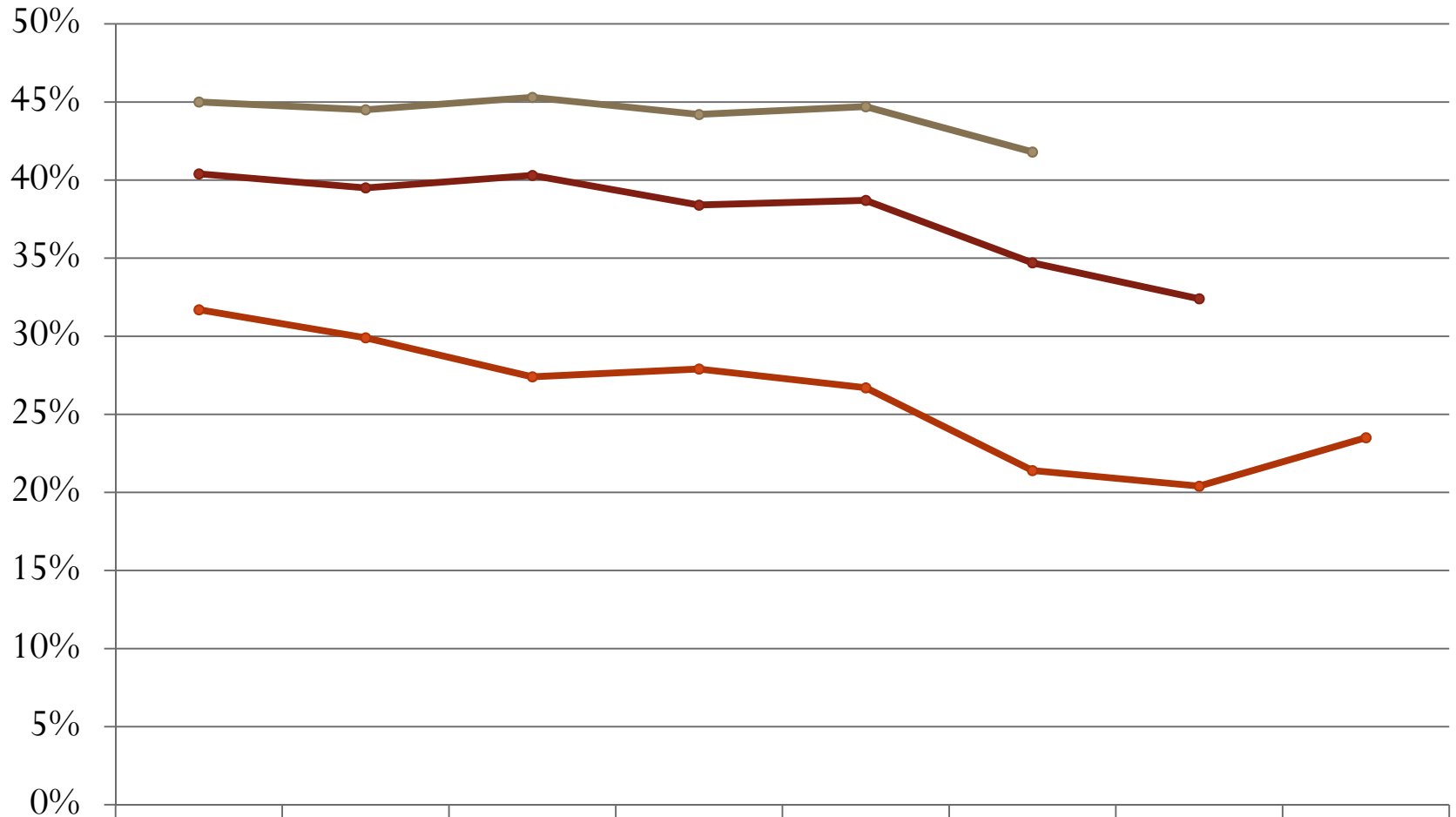
Total Female Recidivists from 2008-2015






	2008	2009	2010	2011	2012	2013	2014	2015
— 12 Months	28.9%	22.7%	17.7%	18.4%	24.8%	20.8%	20.1%	20.8%
— 24 Months	39.2%	32.3%	29.0%	28.2%	34.7%	30.0%	33.4%	
— 36 Months	44.4%	36.3%	35.7%	35.3%	38.4%	35.2%		

Male Recidivism Historical Summary

Total Male Recidivists from 2008-2015



 12 Months	31.7%	29.9%	27.4%	27.9%	26.7%	21.4%	20.4%	23.5%
 24 Months	40.4%	39.5%	40.3%	38.4%	38.7%	34.7%	32.4%	
 36 Months	45.0%	44.5%	45.3%	44.2%	44.7%	41.8%		