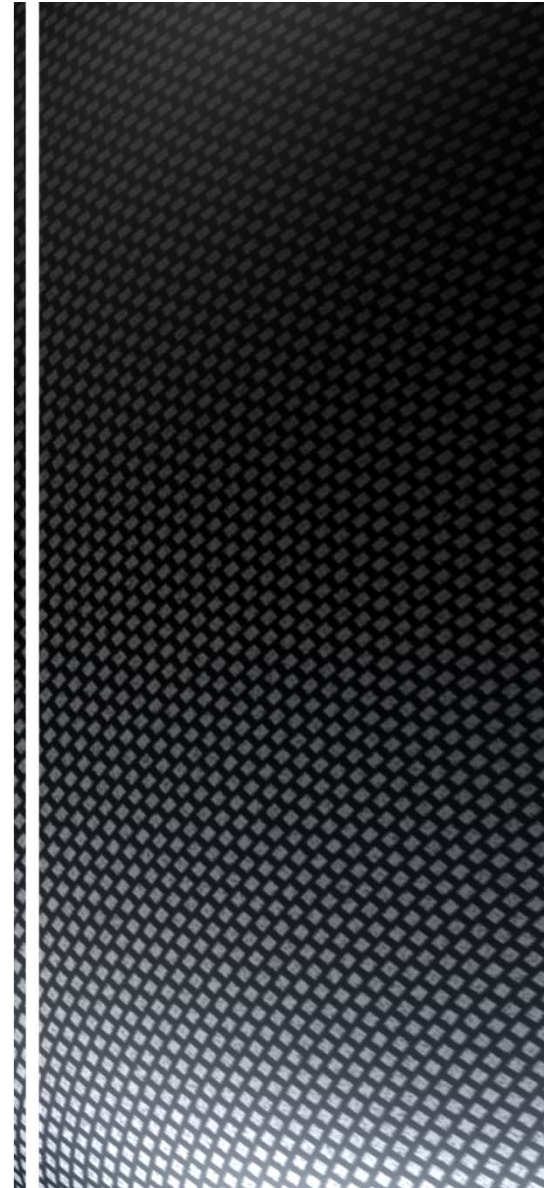


Adult Recidivism

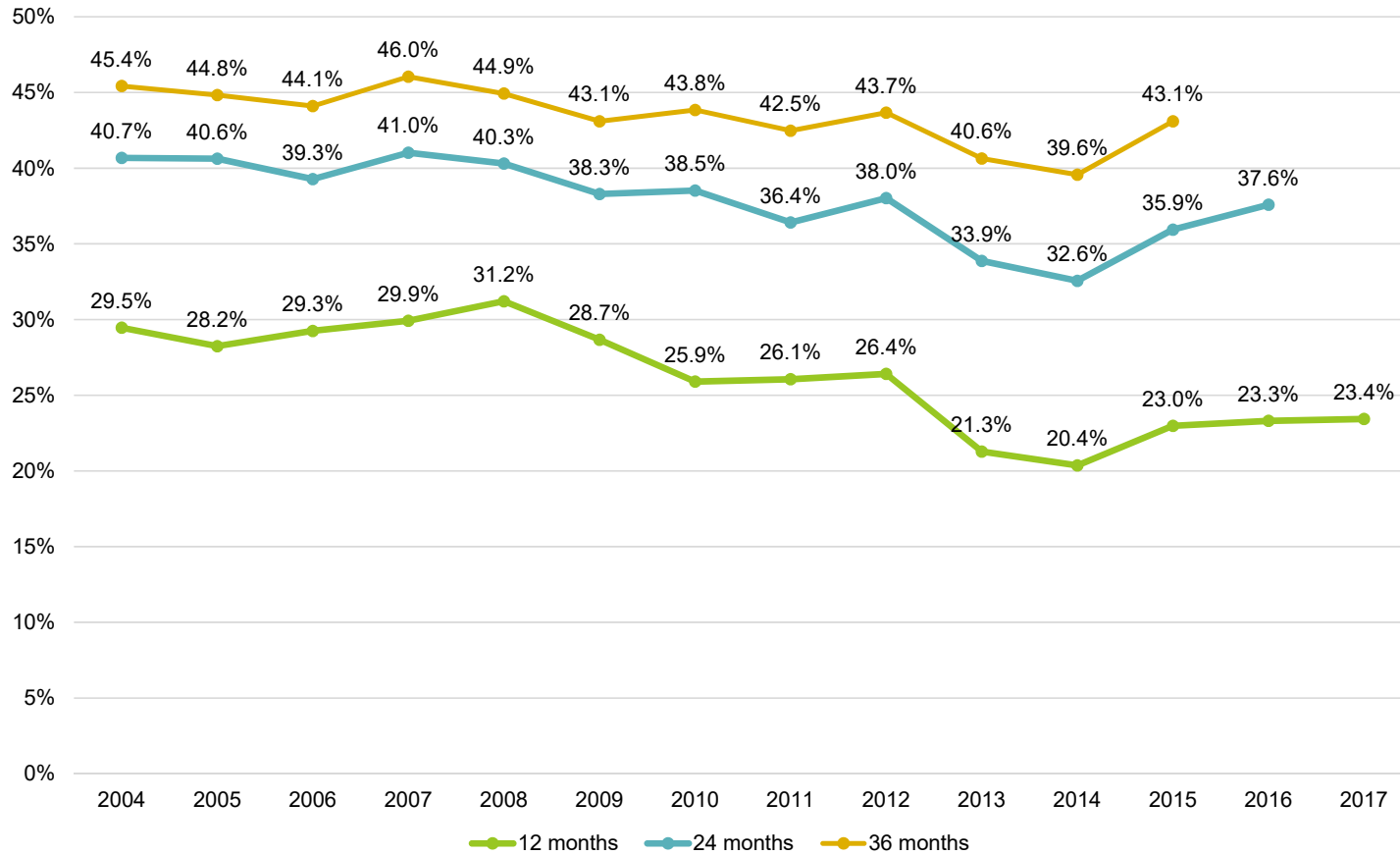
Adult recidivism looks at the offender's status at the one-year, two-year, and three-year marks from their release from prison to supervision or discharge status.

Recidivists include any return to prison for a new felony conviction or for a revocation of parole or suspended sentence supervision.



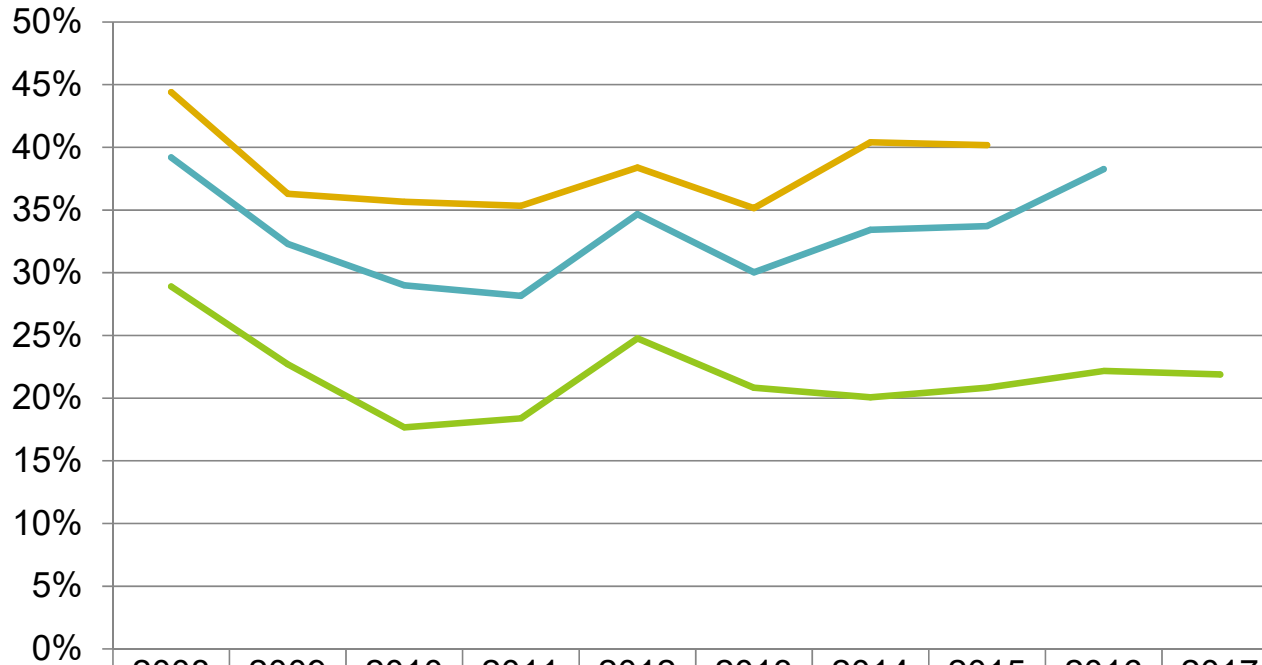
Adult Recidivism Historical Summary

Total Recidivists from 2004-2017



Female Recidivism Historical Summary

Adult Female Recidivists from 2008-2017



	2008	2009	2010	2011	2012	2013	2014	2015	2016	2017
12 months	28.9%	22.7%	17.7%	18.4%	24.8%	20.8%	20.1%	20.8%	22.2%	21.9%
24 months	39.2%	32.3%	29.0%	28.2%	34.7%	30.0%	33.4%	33.7%	38.3%	
36 months	44.4%	36.3%	35.7%	35.3%	38.4%	35.2%	40.4%	40.2%		

Male Recidivism Historical Summary

