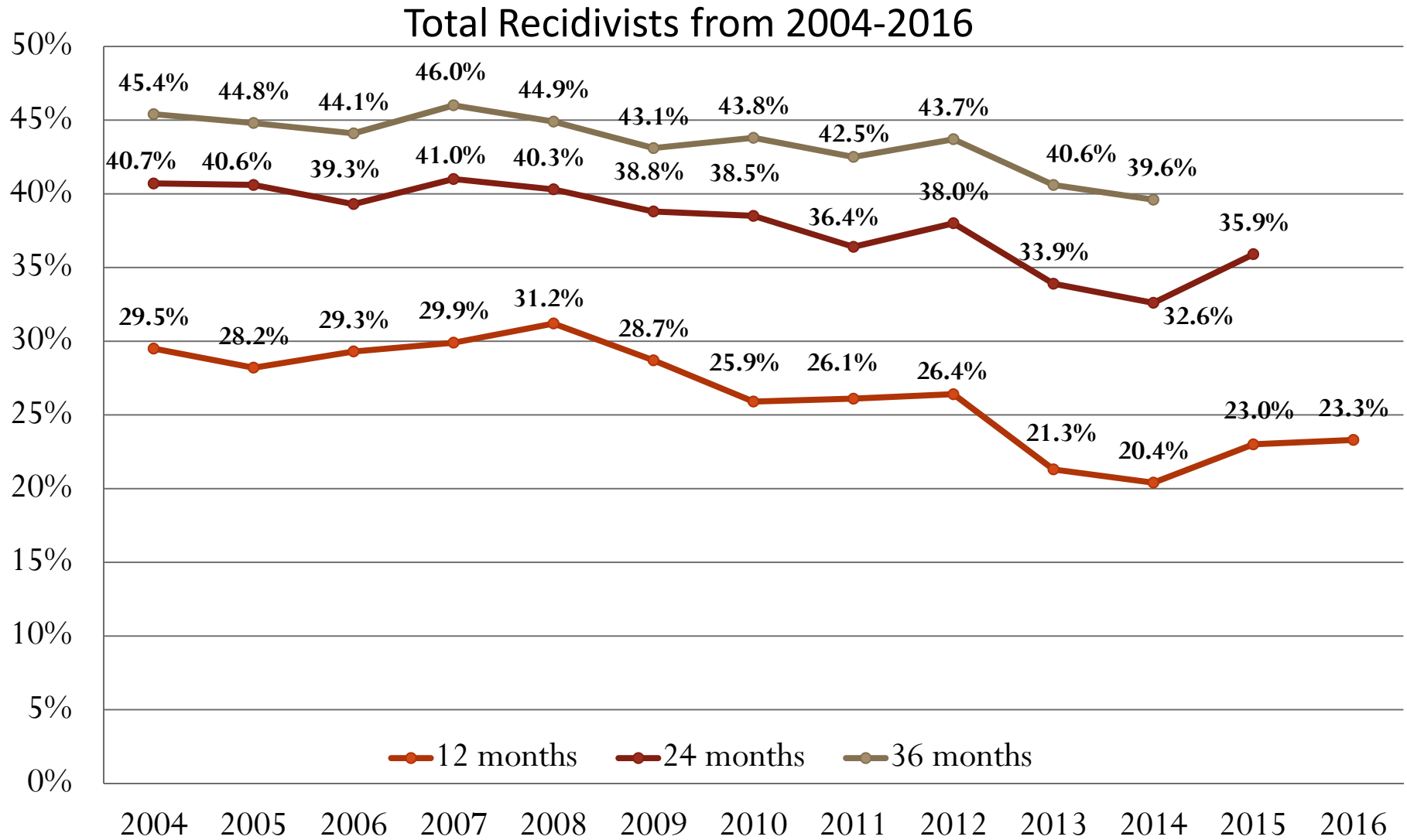


# Adult Recidivism

Adult recidivism looks at the offender's status at the one-year, two-year, and three-year marks from their release from prison to supervision or discharge status.

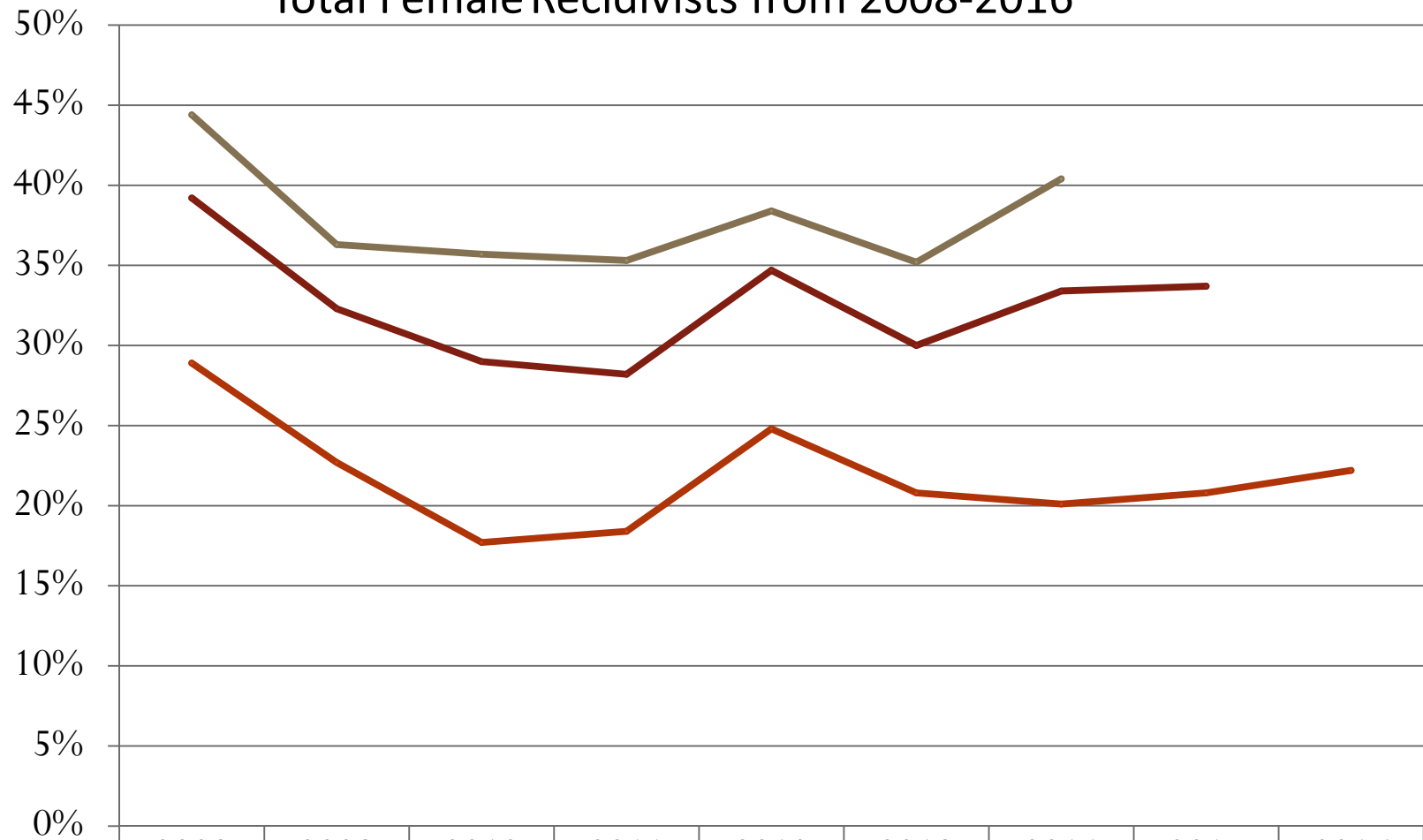
Recidivists include any return to prison for a new felony conviction or for a revocation of parole or suspended sentence supervision.

# Adult Recidivism Historical Summary



# Female Recidivism Historical Summary

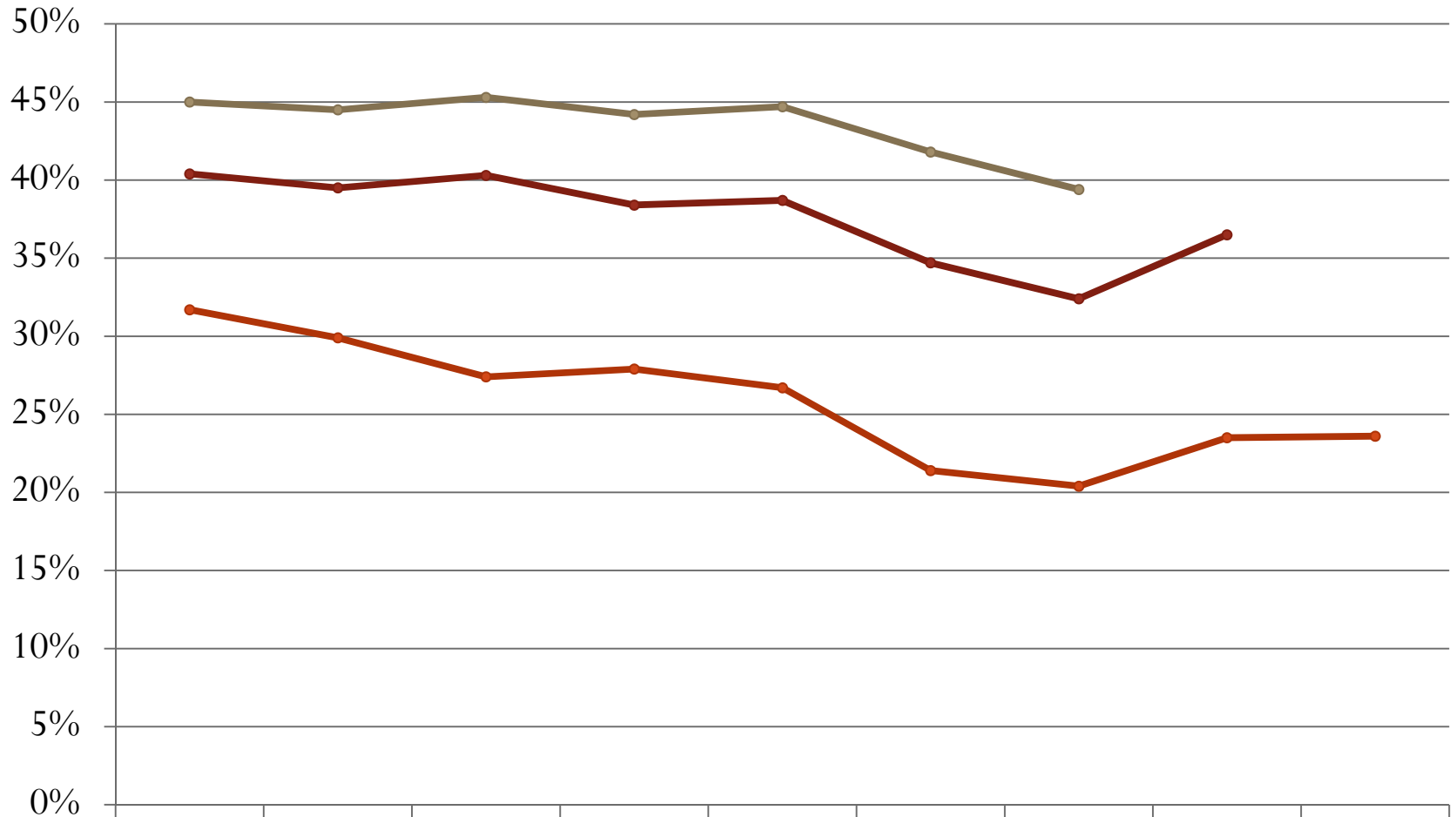
Total Female Recidivists from 2008-2016



|             | 2008  | 2009  | 2010  | 2011  | 2012  | 2013  | 2014  | 2015  | 2016  |
|-------------|-------|-------|-------|-------|-------|-------|-------|-------|-------|
| — 12 Months | 28.9% | 22.7% | 17.7% | 18.4% | 24.8% | 20.8% | 20.1% | 20.8% | 22.2% |
| — 24 Months | 39.2% | 32.3% | 29.0% | 28.2% | 34.7% | 30.0% | 33.4% | 33.7% |       |
| — 36 Months | 44.4% | 36.3% | 35.7% | 35.3% | 38.4% | 35.2% | 40.4% |       |       |

# Male Recidivism Historical Summary

## Total Male Recidivists from 2008-2015



|           | 2008  | 2009  | 2010  | 2011  | 2012  | 2013  | 2014  | 2015  | 2016  |
|-----------|-------|-------|-------|-------|-------|-------|-------|-------|-------|
| 12 Months | 31.7% | 29.9% | 27.4% | 27.9% | 26.7% | 21.4% | 20.4% | 23.5% | 23.6% |
| 24 Months | 40.4% | 39.5% | 40.3% | 38.4% | 38.7% | 34.7% | 32.4% | 36.5% |       |
| 36 Months | 45.0% | 44.5% | 45.3% | 44.2% | 44.7% | 41.8% | 39.4% |       |       |