

Juvenile Recidivism

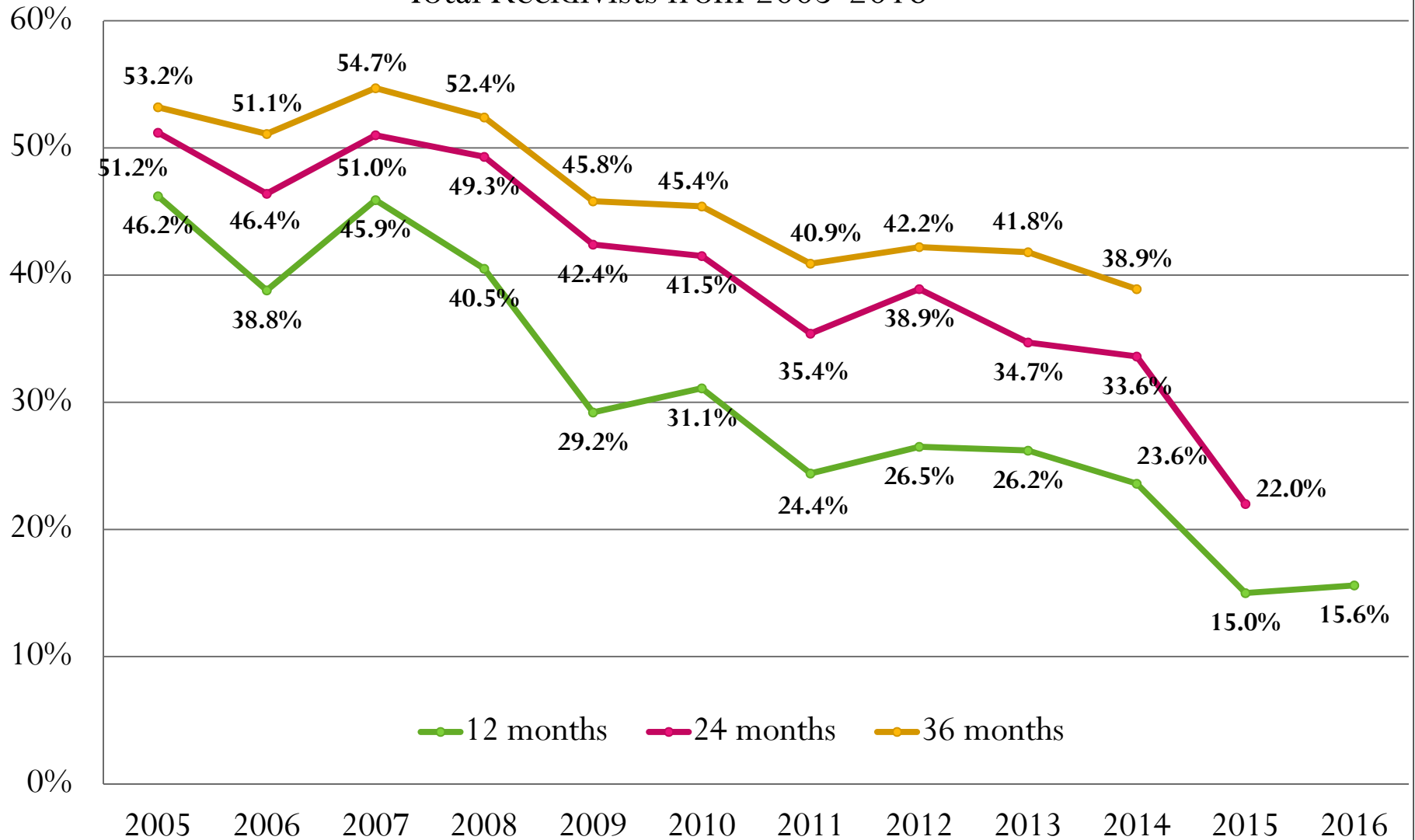
Juvenile recidivism looks at the youth's status at the one-year, two-year, and three-year marks from their release to aftercare.

The follow are counted as recidivists:

- Revocation of aftercare
- Adjudication for a new offense and recommitted/remanded back to DOC
- Admitted to adult prison

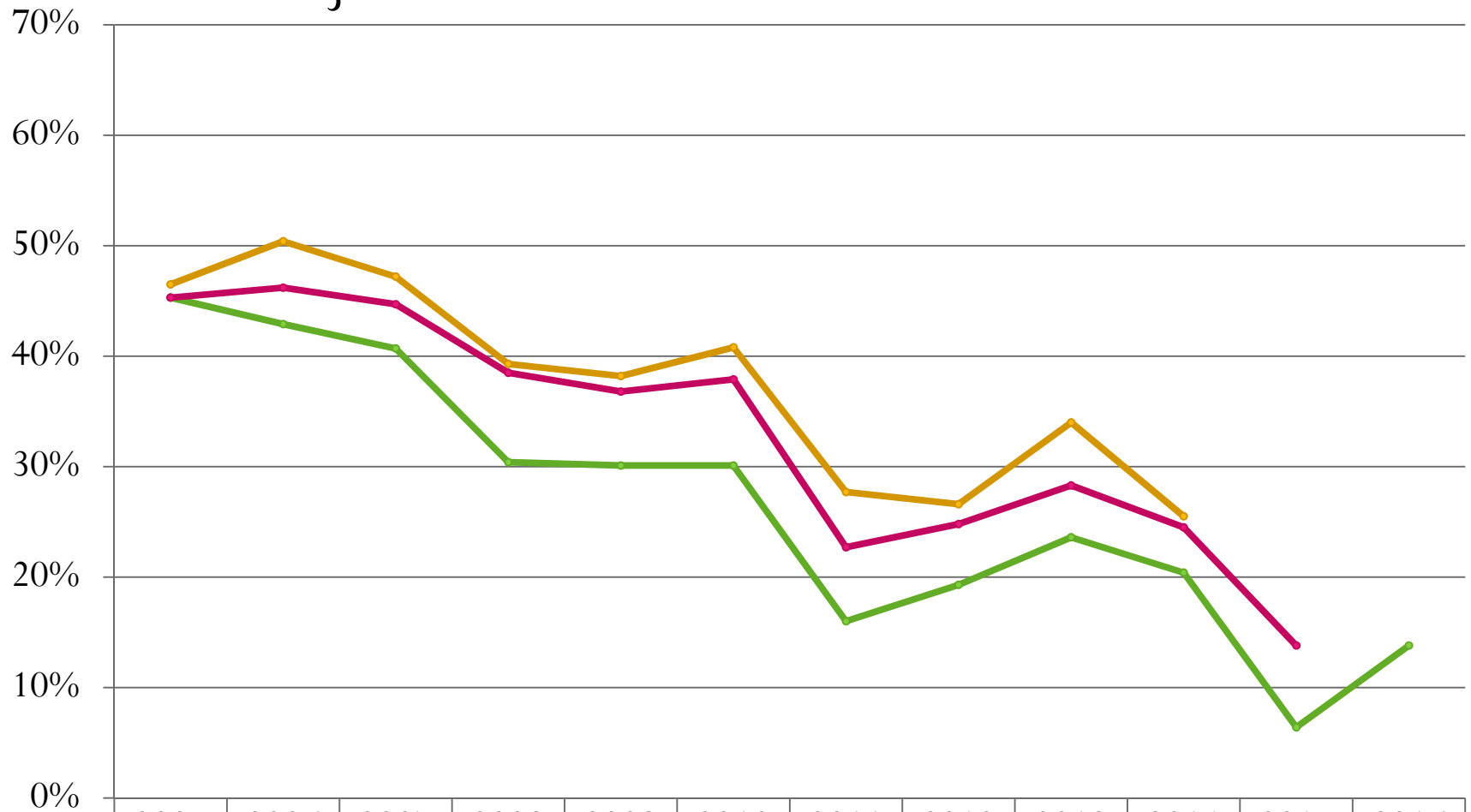
Juvenile Recidivism Historical Summary

Total Recidivists from 2005-2016



Juvenile Female Recidivism Historical Summary

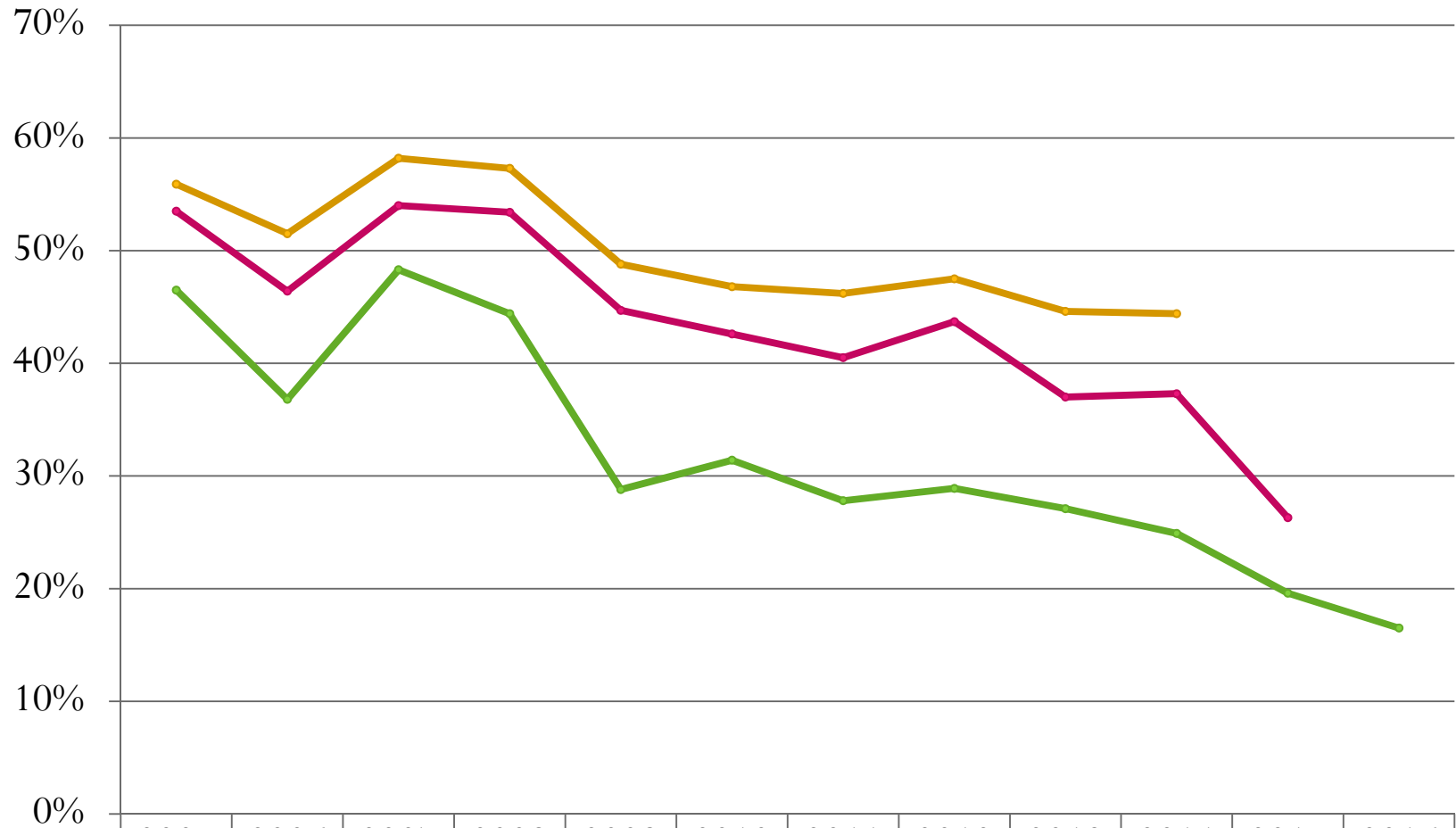
Total Juvenile Female Recidivists from 2005-2016



	2005	2006	2007	2008	2009	2010	2011	2012	2013	2014	2015	2016
12 Months	45.3%	42.9%	40.7%	30.4%	30.1%	30.1%	16.0%	19.3%	23.6%	20.4%	6.4%	13.8%
24 Months	45.3%	46.2%	44.7%	38.5%	36.8%	37.9%	22.7%	24.8%	28.3%	24.5%	13.8%	
36 Months	46.5%	50.4%	47.2%	39.3%	38.2%	40.8%	27.7%	26.6%	34.0%	25.5%		

Juvenile Male Recidivism Historical Summary

Total Juvenile Male Recidivists from 2005-2016



12 Months	46.5%	36.8%	48.3%	44.4%	28.8%	31.4%	27.8%	28.9%	27.1%	24.9%	19.6%	16.5%
24 Months	53.5%	46.4%	54.0%	53.4%	44.7%	42.6%	40.5%	43.7%	37.0%	37.3%	26.3%	
36 Months	55.9%	51.5%	58.2%	57.3%	48.8%	46.8%	46.2%	47.5%	44.6%	44.4%		