

Juvenile Recidivism

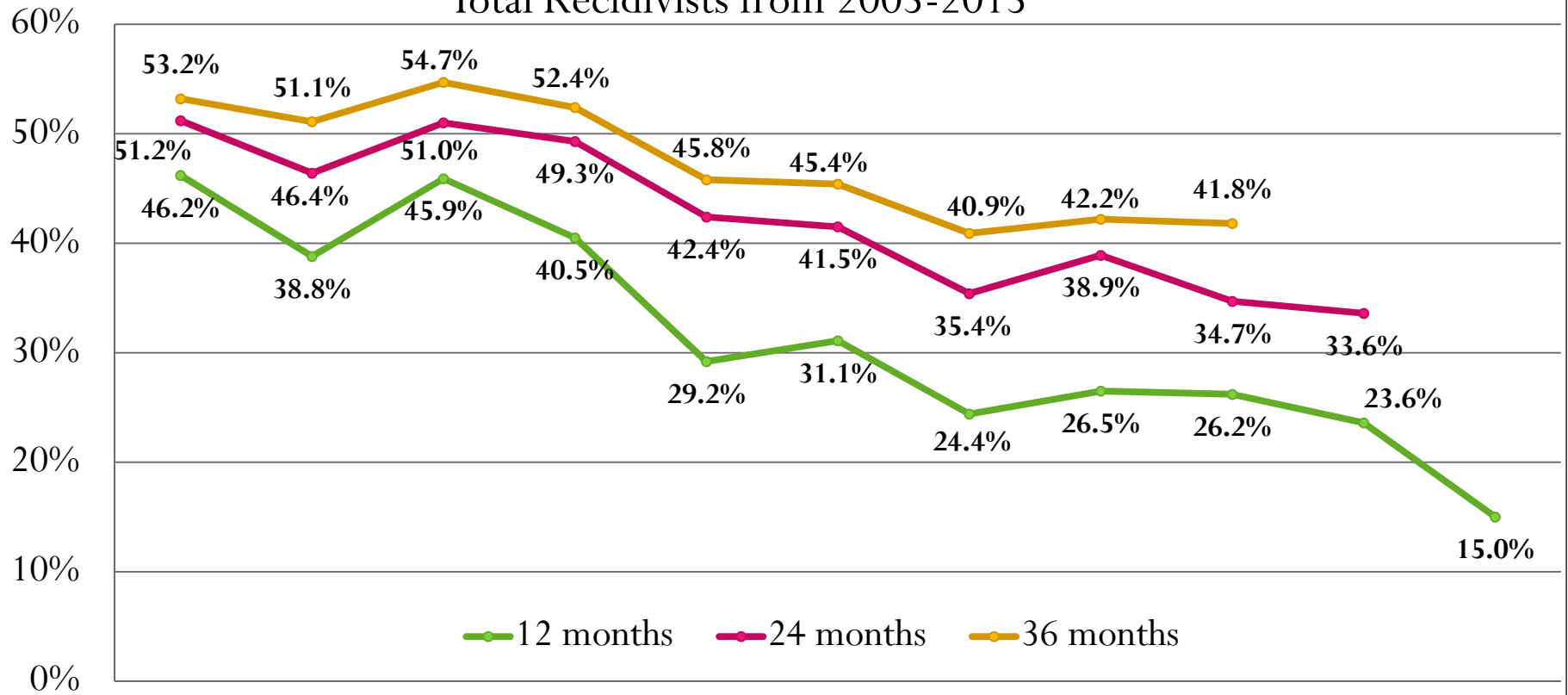
Juvenile recidivism looks at the youth's status at the one-year, two-year, and three-year marks from their release to aftercare.

The follow are counted as recidivists:

- Revocation of aftercare
- Adjudication for a new offense and recommitted/remanded back to DOC
- Admitted to adult prison

Juvenile Recidivism Historical Summary

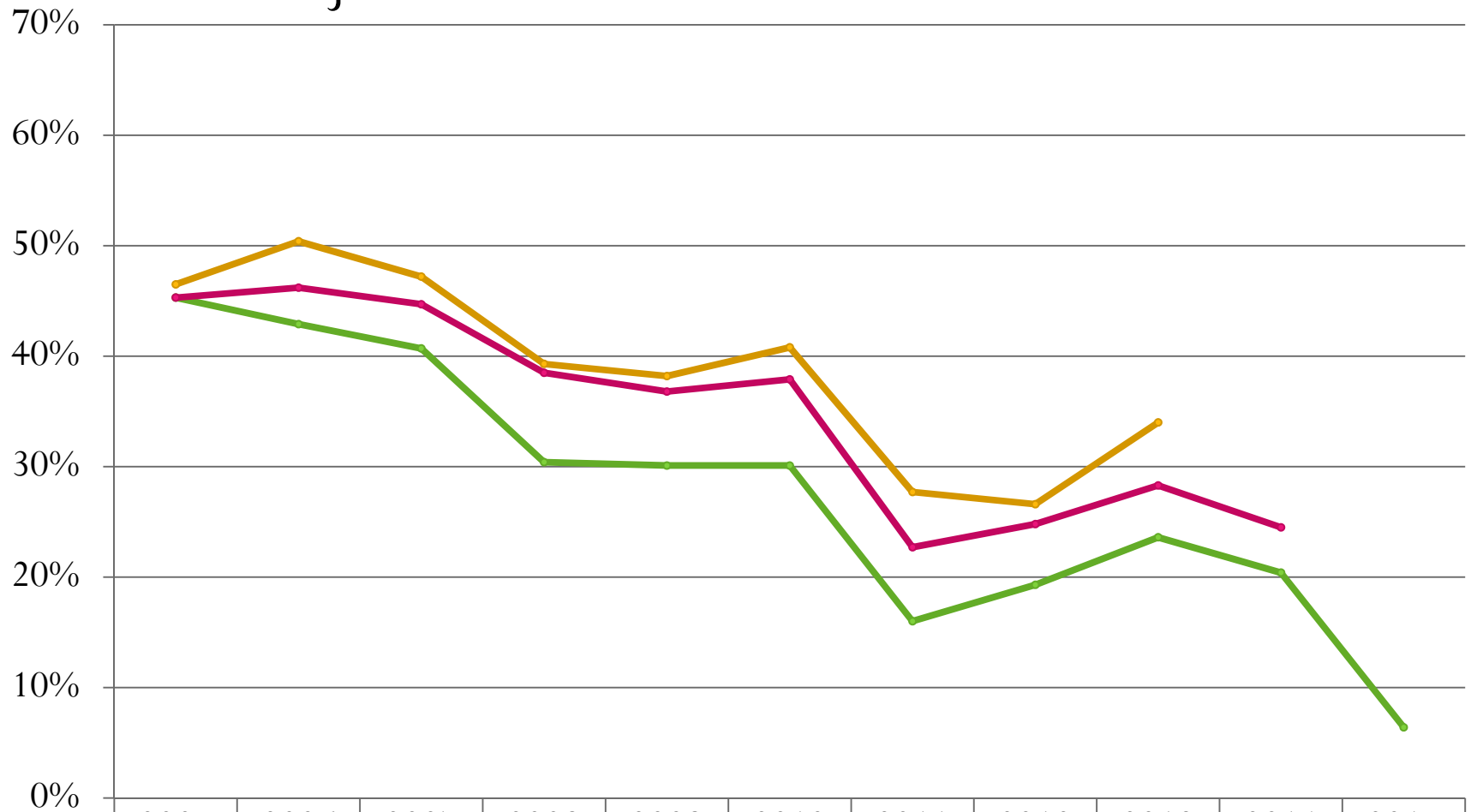
Total Recidivists from 2005-2015



	2005	2006	2007	2008	2009	2010	2011	2012	2013	2014	2015
12 months # of Recidivists/ # Released	138/299	139/358	177/386	198/489	139/476	135/434	102/418	113/427	107/409	80/339	41/273
24 months # of Recidivists/ # Released	153/299	166/358	197/386	241/489	202/476	180/434	148/418	166/427	142/409	114/339	
36 months # of Recidivists/ # Released	159/299	183/358	211/386	256/489	218/476	197/434	171/418	180/427	171/409		

Juvenile Female Recidivism Historical Summary

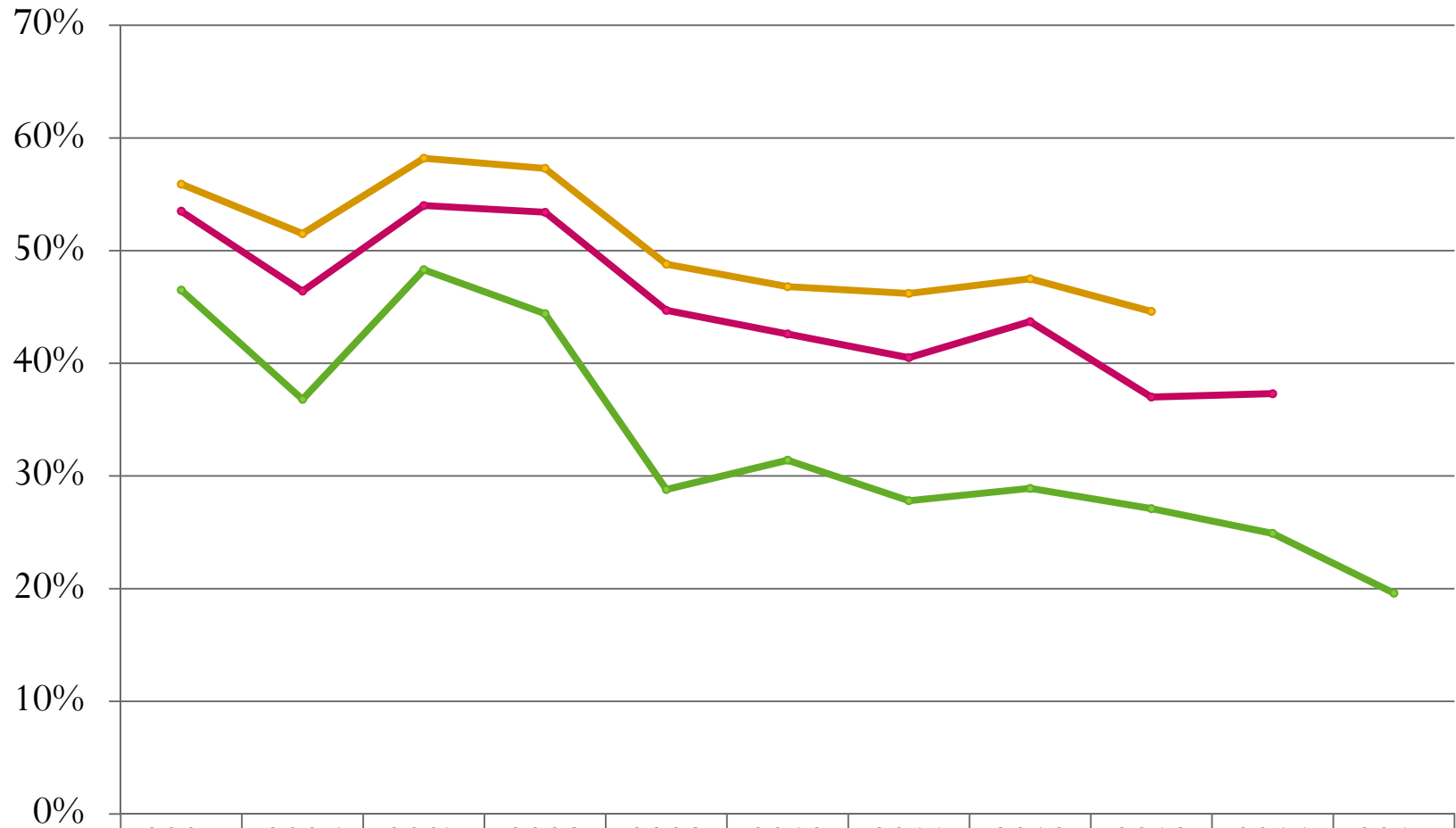
Total Juvenile Female Recidivists from 2005-2015



	2005	2006	2007	2008	2009	2010	2011	2012	2013	2014	2015
12 Months	45.3%	42.9%	40.7%	30.4%	30.1%	30.1%	16.0%	19.3%	23.6%	20.4%	6.4%
24 Months	45.3%	46.2%	44.7%	38.5%	36.8%	37.9%	22.7%	24.8%	28.3%	24.5%	
36 Months	46.5%	50.4%	47.2%	39.3%	38.2%	40.8%	27.7%	26.6%	34.0%		

Juvenile Male Recidivism Historical Summary

Total Juvenile Male Recidivists from 2005-2015



12 Months	46.5%	36.8%	48.3%	44.4%	28.8%	31.4%	27.8%	28.9%	27.1%	24.9%	19.6%
24 Months	53.5%	46.4%	54.0%	53.4%	44.7%	42.6%	40.5%	43.7%	37.0%	37.3%	
36 Months	55.9%	51.5%	58.2%	57.3%	48.8%	46.8%	46.2%	47.5%	44.6%		