

South Dakota Corrections Commission

October 16, 2014

Mitchell, SD



Department of Corrections SD Public Safety Improvement Act

1. **Tribal Pilot** Agreement signed with Sisseton-Wahpeton Oyate in May 2014. SWO hired agent August 2014, trained and assuming case supervision.
2. **CTP Housing** RFP issued and contract was signed with St. Francis House in Sioux Falls in May 2014.
3. **Reinvestment Act** Administrative rules are in place. DOC received numbers from UJS. Checks went out this week. \$314,600 paid based on FY 14 probation numbers.
4. **Earned Discharge Credits** (FY 14) 4,085 parolees; 3,495 (85.6%) Q; 3,203 earned (91.6% of Q) and (78.4% of all parolees) 758,348 days of credits awarded, average days earned 236.8 and 915 offenders discharged with credits.



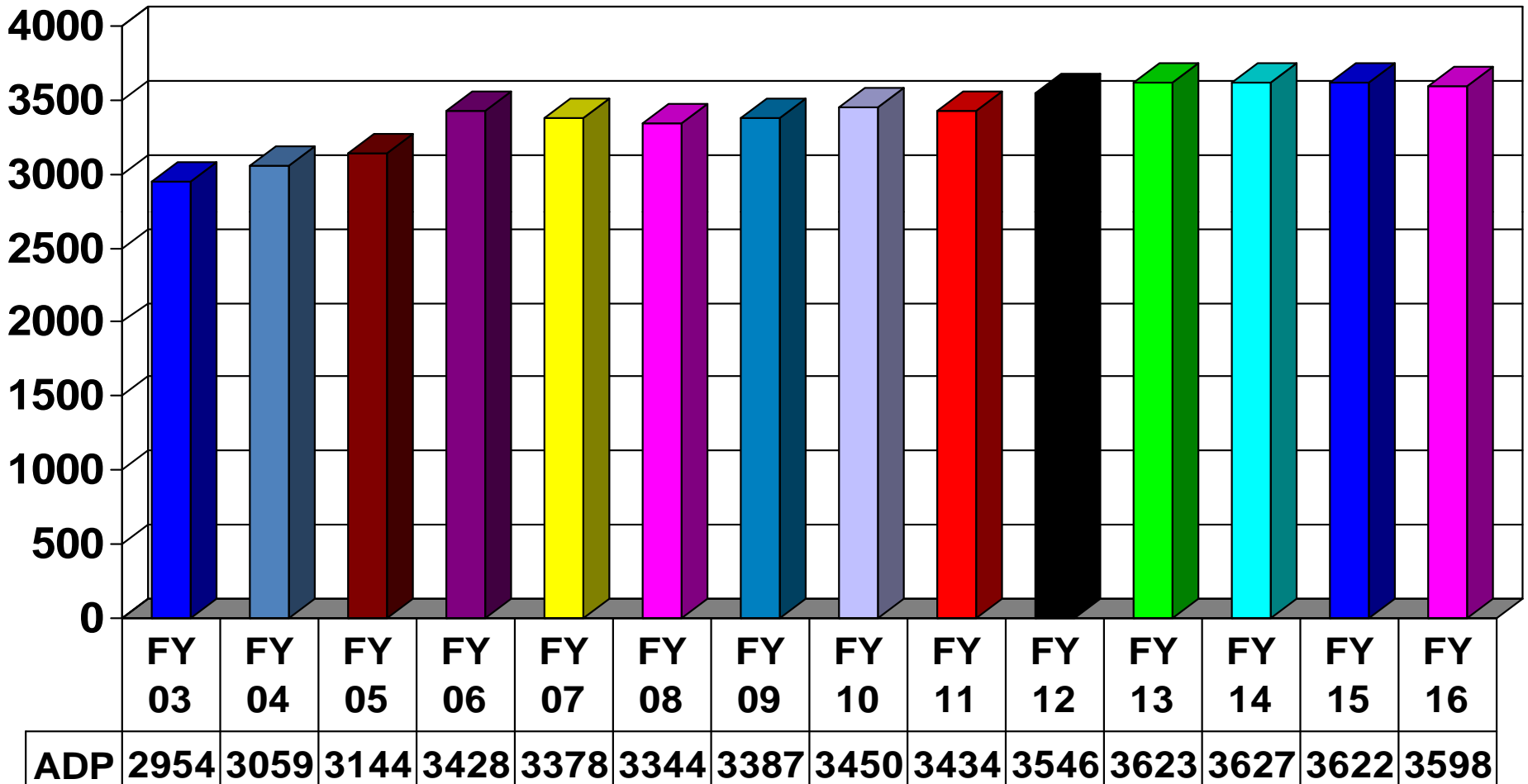
Department of Corrections

SD Public Safety Improvement Act

5. **Validated Risk Assessments** Contract for validation of LSI-R, CRA and CRR. Final report completed, on site presentation of findings and next steps pending.
6. **EPICs** Effective Practices in Community Supervision – case management approach. DOC and UJS involved in a T4T process via UC. All parole agents will be given end users training.
7. **Training** All of the parole agents and Parole Board members have been trained in EBP. New Board members have received required EBP training within 60 days of appointment.
8. **SAVIN** automated victim notification system. DOC working with AG's office on data transfer and identifying junctures of notice.
9. **AFAS** Improved restitution collection – working with UJS on procedures to reconcile restitution balances and notices of DOC discharges



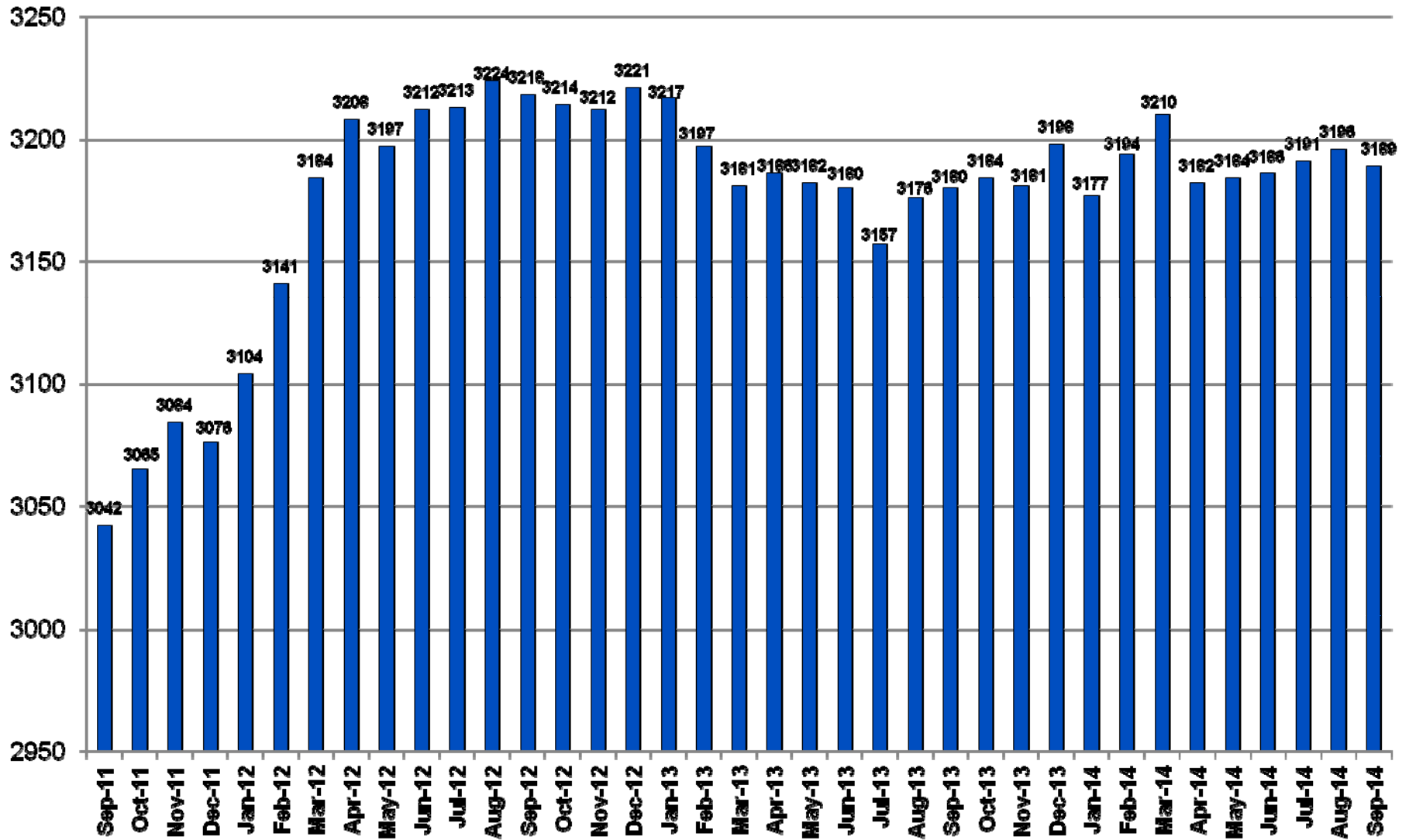
Actual Average Daily Population of Adult Inmates



FY03 – FY14 are actual. FY15 and FY16 are projected.

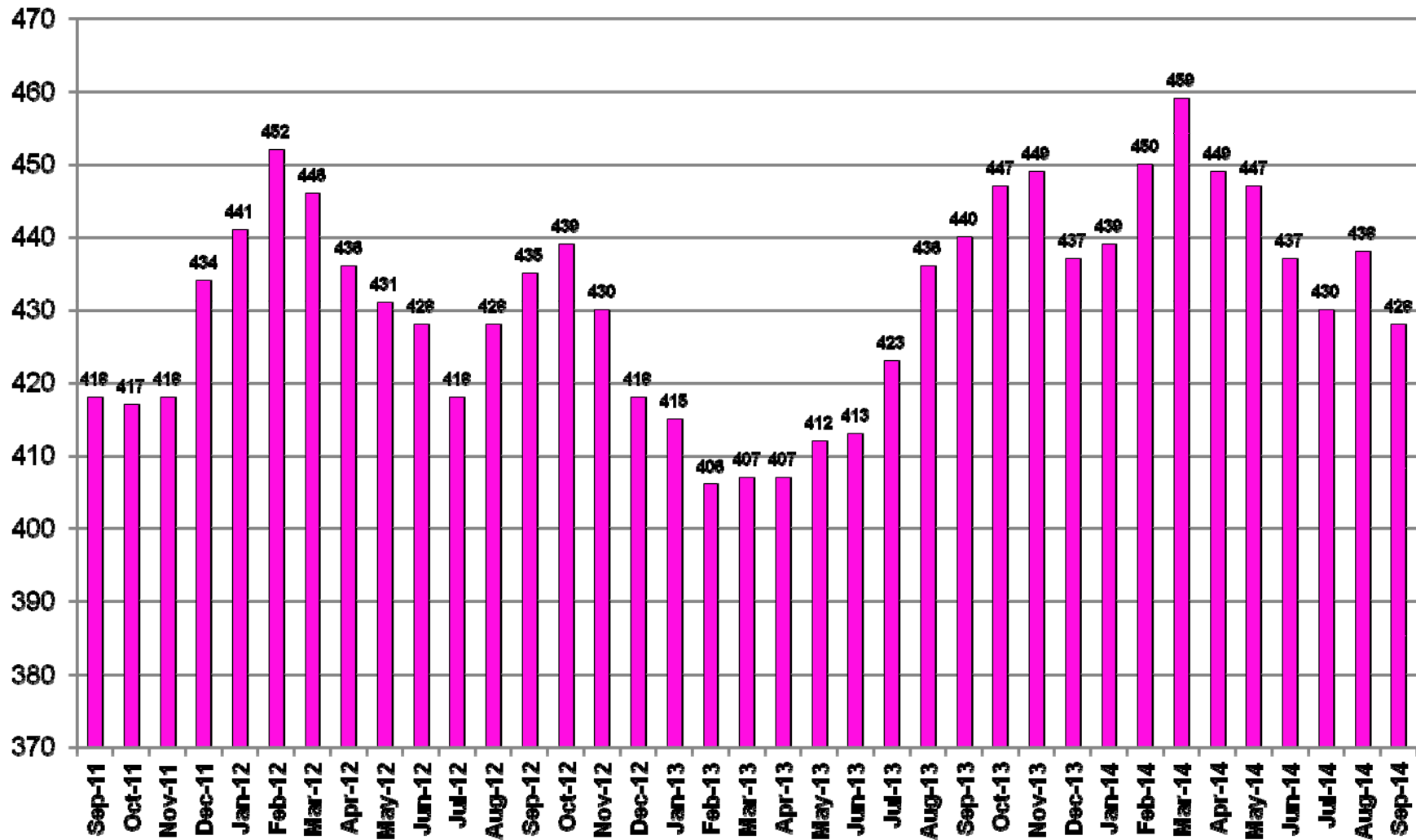
Male Inmate ADC by Month

September 2011 to September 2014



Female Inmate ADC by Month

September 2011 to September 2014





Male Classification by Custody Status

	MX/SPEC	High Medium	Low Medium	MN/CTP/ED
2014	17%	19%	40%	24%
2013	15%	18%	40%	28%
2012	16%	17%	40%	24%
2011	16%	20%	42%	22%
2010	14%	19%	43%	23%
2009	14%	19%	39%	28%
2008	13%	18%	41%	28%
2007	14%	22%	37%	27%
2006	14%	20%	36%	30%
2005	15%	20%	35%	30%



Female Classification by Custody Status

	MX/SPEC	High Medium	Low Medium	MN/CTP/ED
2014	7%	7%	33%	52%
2013	11%	8%	35%	46%
2012	9%	9%	28%	53%
2011	12%	8%	33%	47%
2010	14%	7%	35%	44%
2009	12%	6%	31%	52%
2008	7%	8%	35%	49%
2007	9%	6%	36%	49%
2006	7%	6%	35%	52%
2005	6%	7%	40%	47%