

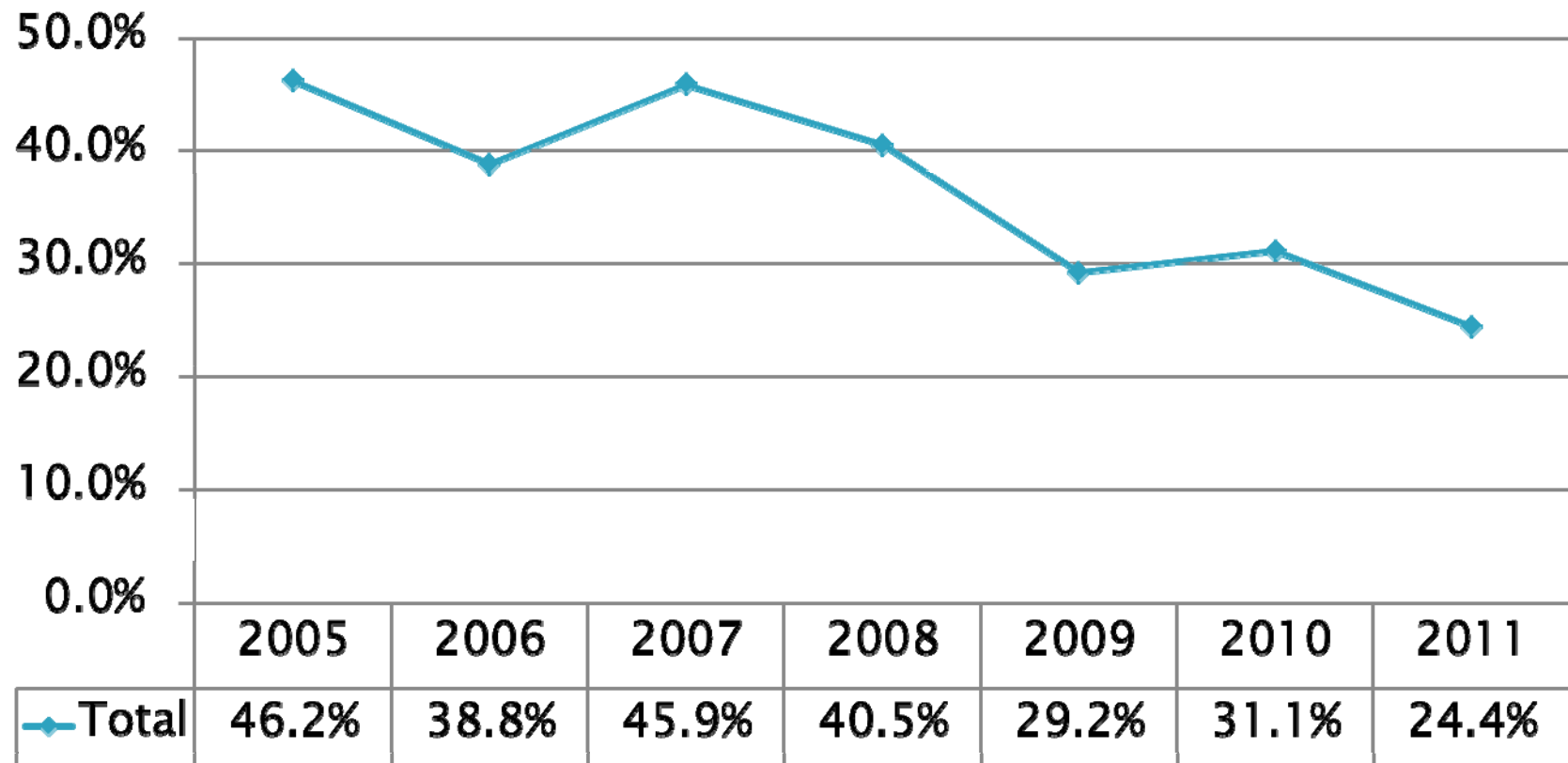
# Juvenile Recidivism Summary

2012 Update  
2011 1-year Rates

# 2011 Releases 1-year Rates

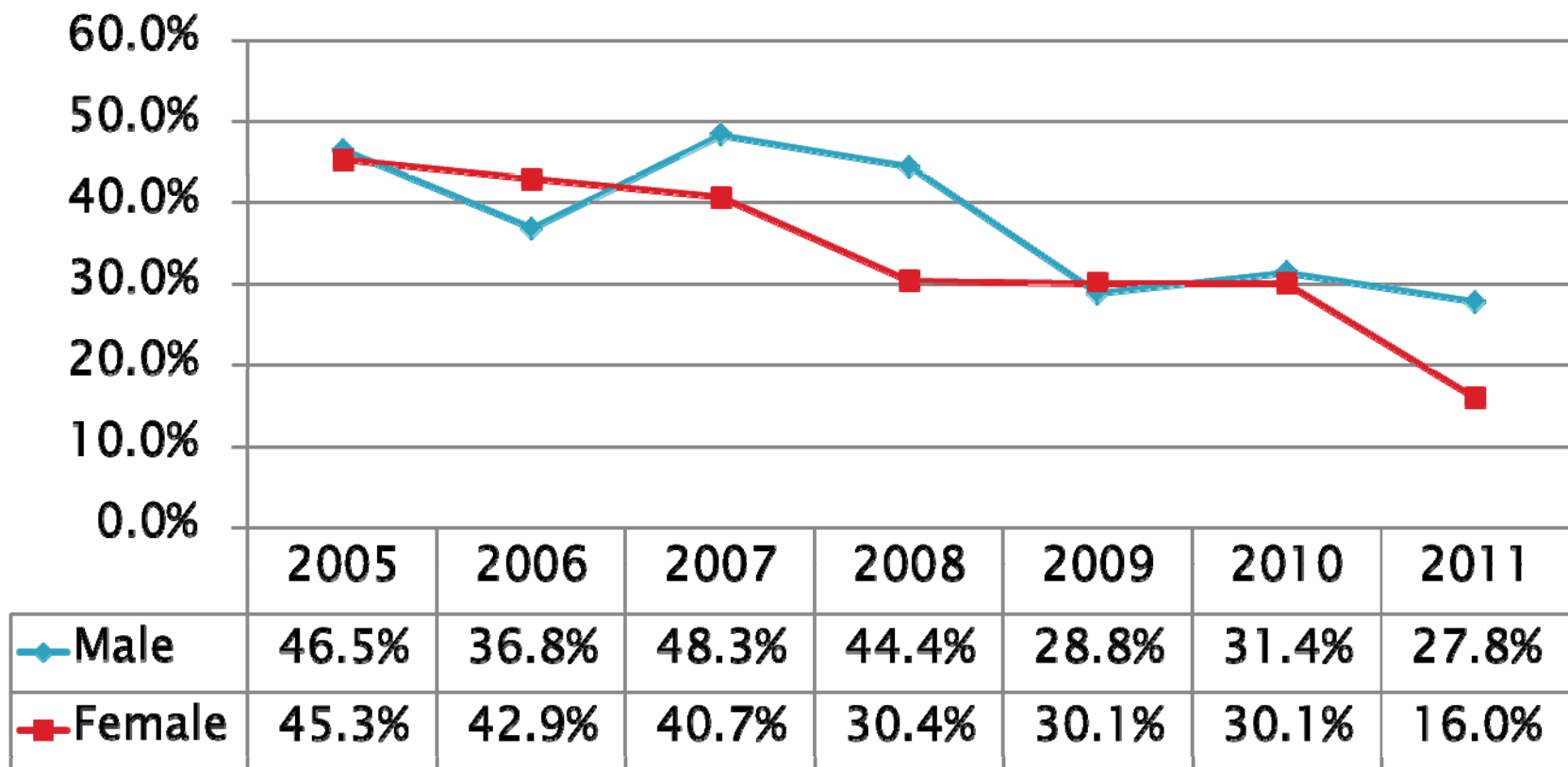
# 1-Year Juvenile Recidivism Rate

**Total Recidivism**



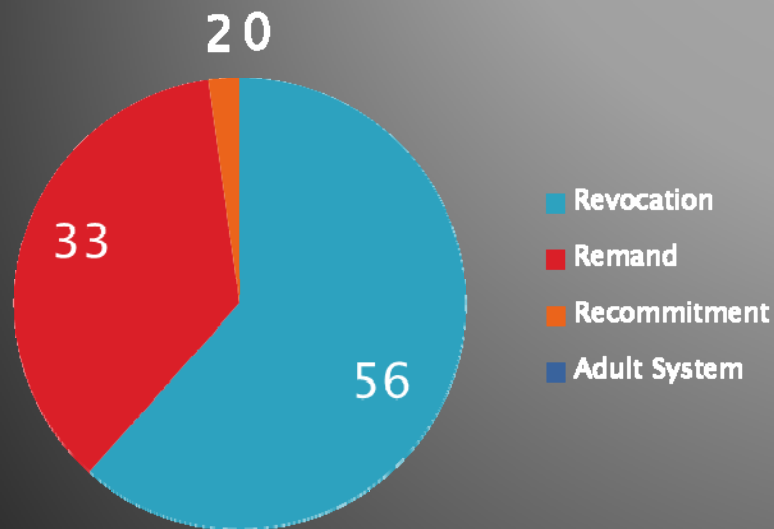
# 1-Year Juvenile Recidivism Rate

Recidivism by Sex

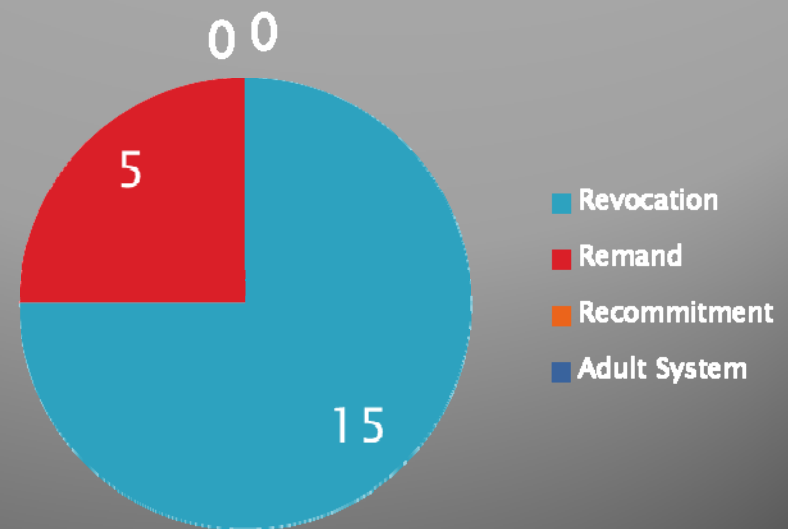


# 1-Year Recidivism by Type

Males

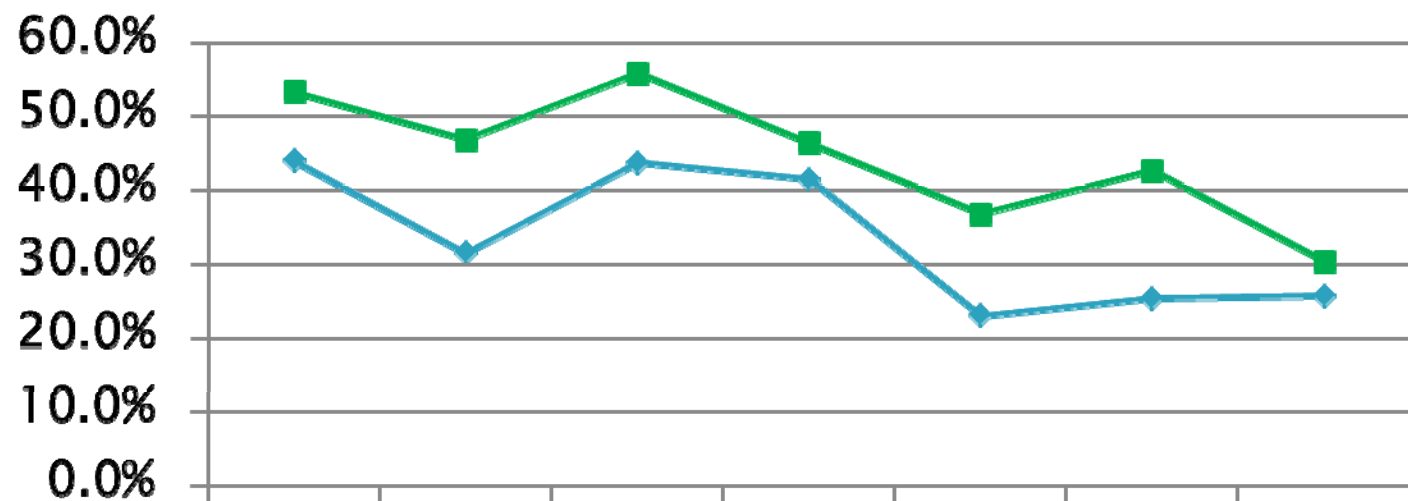


Females



# 1-Year Juvenile Recidivism Rate

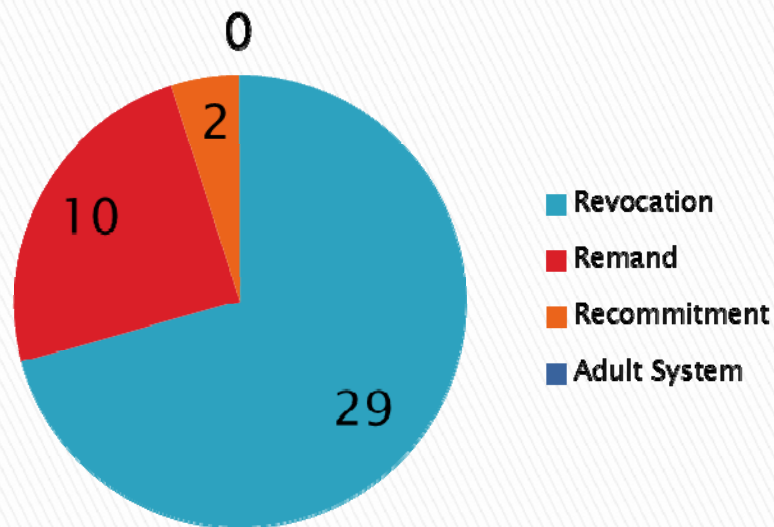
**Males by Race**



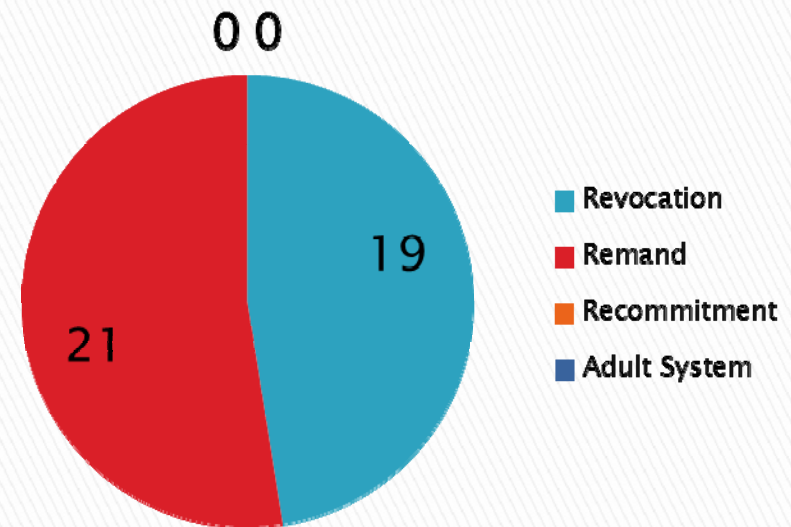
	2005	2006	2007	2008	2009	2010	2011
White Males	44.0%	31.5%	43.7%	41.5%	23.0%	25.4%	25.7%
Native American Males	53.3%	46.8%	55.8%	46.4%	36.8%	42.7%	30.4%

# 1-Year Recidivism by Type

**White Males**

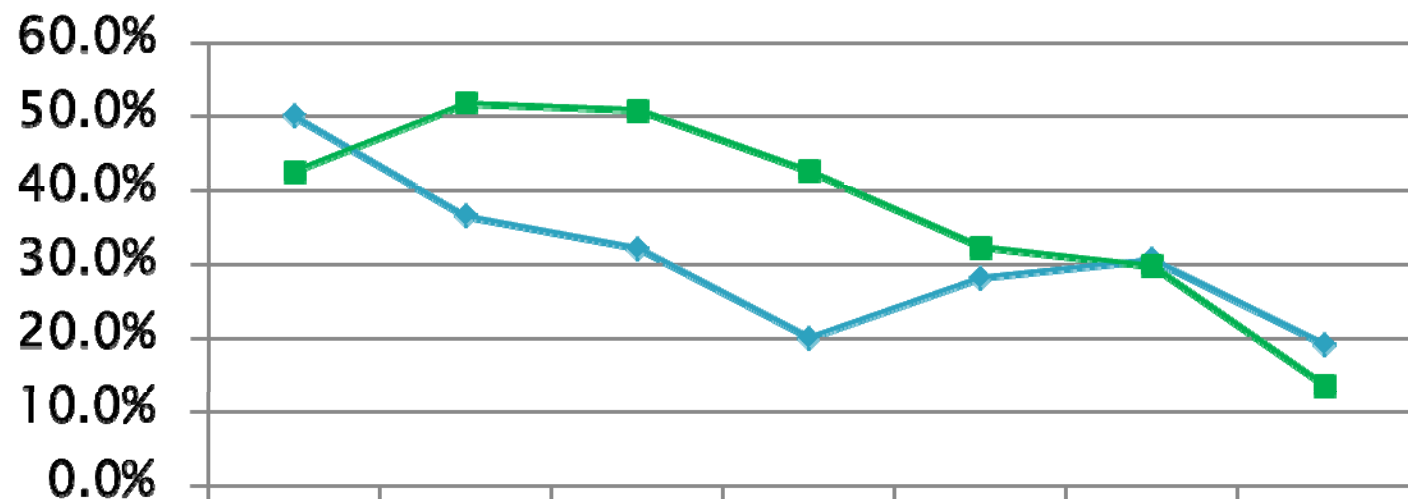


**Native American Males**



# 1-Year Juvenile Recidivism Rate

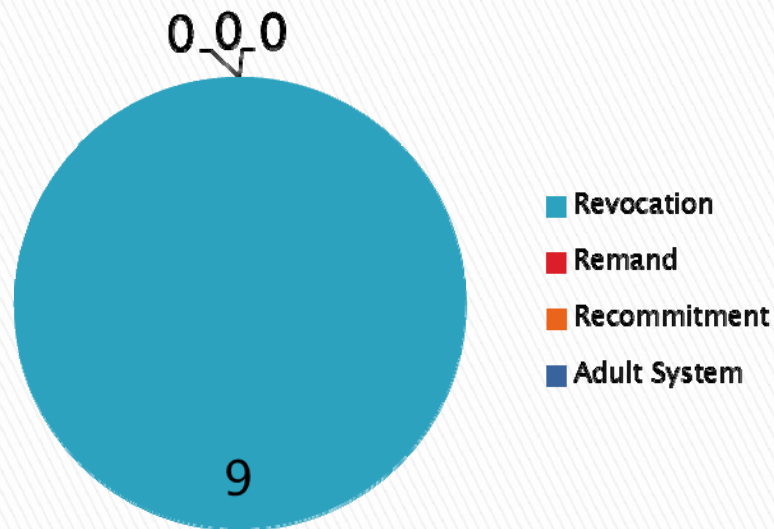
**Females by Race**



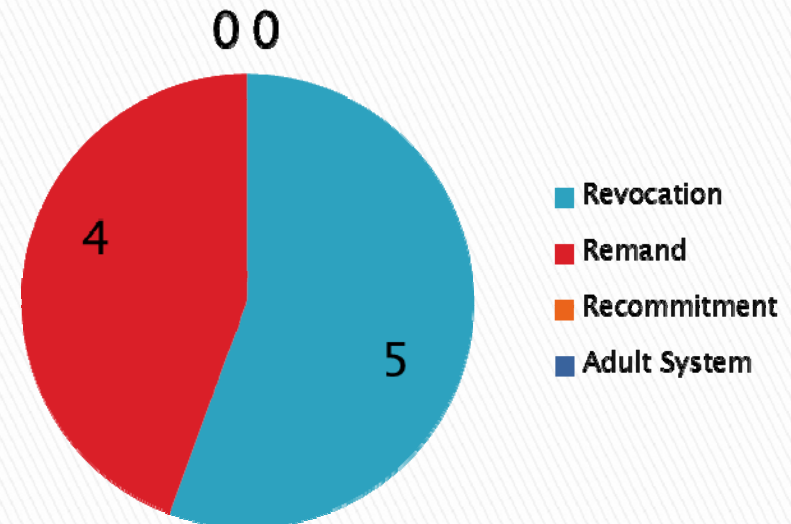
	2005	2006	2007	2008	2009	2010	2011
White Females	50.0%	36.5%	32.1%	20.0%	28.1%	30.6%	19.1%
Native American Females	42.5%	51.8%	50.8%	42.6%	32.3%	29.8%	13.6%

# 1-Year Recidivism by Type

**White Females**

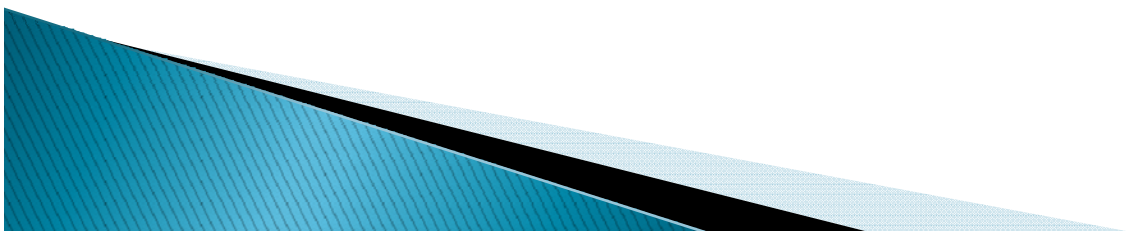


**Native American Females**



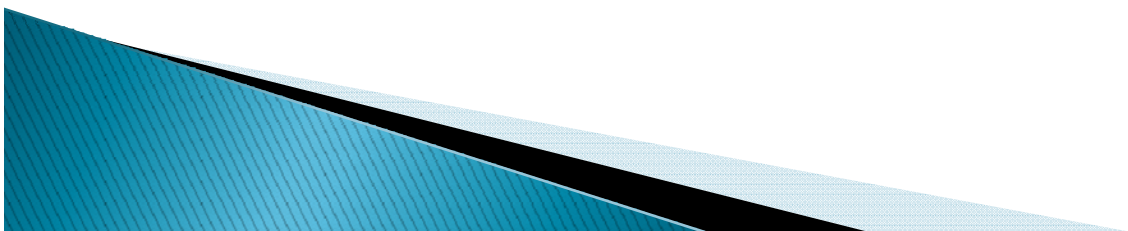
# 2011 1-year Recidivism – Males

	<=14	15	16	17	>=18	Total
2005	52.0%	69.7%	50.9%	40.7%	29.2%	46.5%
2006	59.0%	45.5%	49.0%	26.6%	16.7%	36.8%
2007	66.7%	58.5%	52.4%	44.9%	23.3%	48.3%
2008	46.9%	62.5%	60.0%	36.2%	21.9%	44.4%
2009	32.5%	36.4%	38.9%	19.8%	21.7%	28.8%
2010	34.2%	46.3%	49.4%	24.0%	10.4%	31.4%
2011	38.7%	50.0%	31.3%	28.4%	8.7%	27.8%



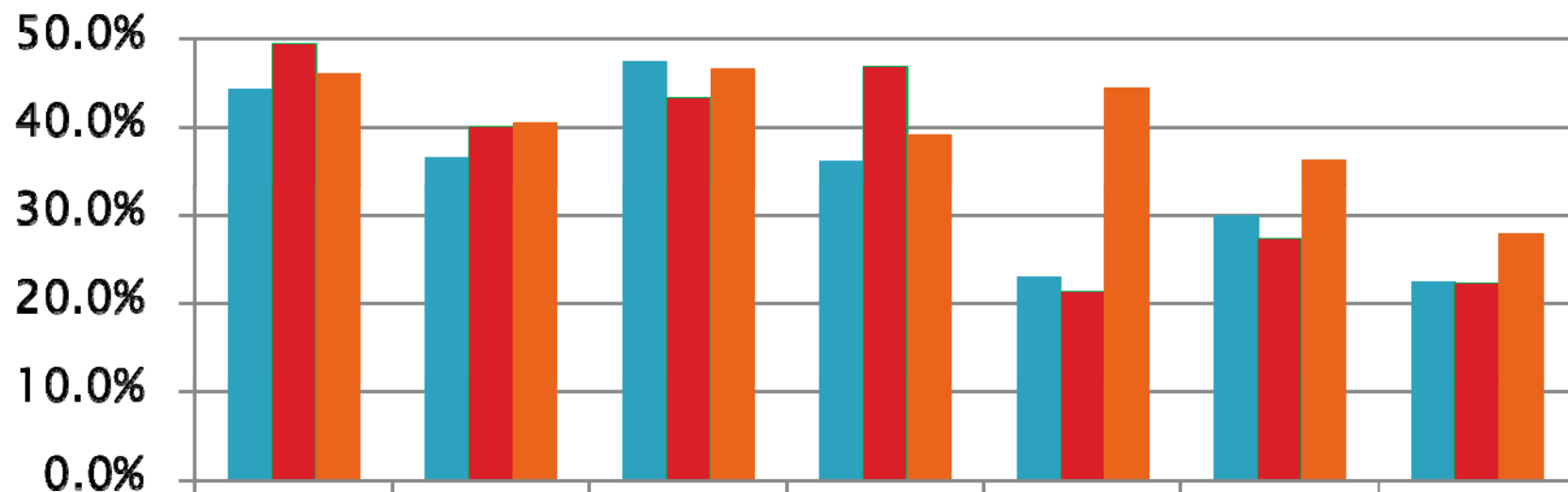
# 2011 1-year Recidivism – Females

	<=14	15	16	17	>=18	Total
2005	38.5%	83.3%	53.6%	38.1%	8.3%	45.3%
2006	61.5%	53.8%	46.9%	38.2%	7.1%	42.9%
2007	58.8%	52.2%	46.4%	32.6%	0.0%	40.7%
2008	58.3%	34.6%	34.3%	27.7%	0.0%	30.4%
2009	12.5%	38.7%	52.6%	17.5%	5.3%	30.1%
2010	25.0%	40.0%	51.7%	18.2%	7.1%	30.1%
2011	25.0%	16.7%	26.7%	11.9%	0.0%	16.0%



# 1-Year Juvenile Recidivism Rate

Recidivism by Region



	2005	2006	2007	2008	2009	2010	2011
East	44.3%	36.4%	47.4%	36.1%	23.0%	29.9%	22.4%
South	49.4%	40.0%	43.2%	46.7%	21.2%	27.2%	22.2%
West	46.0%	40.4%	46.6%	39.1%	44.4%	36.2%	27.8%