

Reentry Workgroup

Prison Population

April 24, 2012

1:00 – 3:30 PM

Solem Public Safety Center – Multipurpose Room

Pierre, SD

Historical ADC Male Inmates

| Year | Number | % Growth |
|-----------------------|-------------|----------|
| | | |
| FY 95-96 | 1624 - 1773 | 9% |
| FY 96-97 | 1773 - 1970 | 11% |
| FY 97-98 | 1970 - 2096 | 6% |
| FY 98-99 | 2096 - 2224 | 6% |
| FY 99-00 | 2224 - 2324 | 4% |
| FY 00-01 | 2324 - 2383 | 3% |
| FY 01-02 | 2383 - 2559 | 7% |
| FY 02-03 | 2559 - 2705 | 6% |
| FY 03-04 | 2705 - 2773 | 3% |
| FY 04-05 | 2773 - 2842 | 2% |
| FY 05-06 | 2842 - 3070 | 8% |
| FY 06-07 | 3070 - 3016 | -2% |
| FY 07-08 | 3016 - 2978 | -1% |
| FY 08-09 | 2978- 3013 | 1% |
| FY 09-10 | 3013 - 3066 | 2% |
| FY 10-11 | 3066 - 3033 | -1% |
| FY 11-12 (thru March) | 3033- 3087 | 2% |

Historical ADC Female Inmates

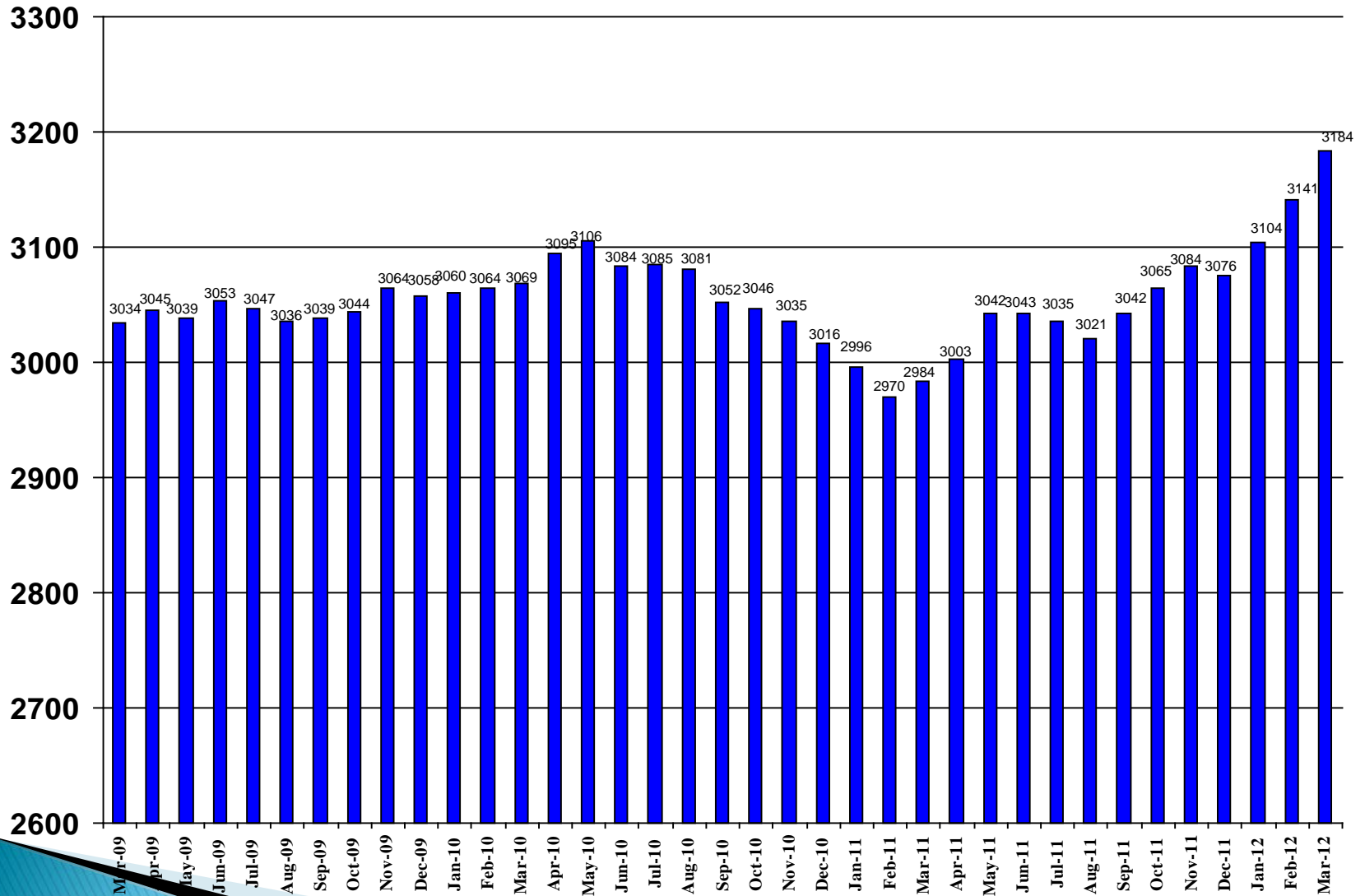
| Year | Number | % Growth |
|-----------------------|----------|----------|
| | | |
| FY 95-96 | 109-135 | 24% |
| FY 96-97 | 135-149 | 10% |
| FY 97-98 | 149-171 | 15% |
| FY 98-99 | 171-200 | 17% |
| FY 99-00 | 200-194 | -3% |
| FY 00-01 | 194-207 | 8% |
| FY 01-02 | 207-222 | 7% |
| FY 02-03 | 222-249 | 12% |
| FY 03-04 | 249-286 | 15% |
| FY 04-05 | 286-302 | 6% |
| FY 05-06 | 302-358 | 19% |
| FY 06-07 | 358-362 | 1% |
| FY 07-08 | 362-366 | 1% |
| FY 08-09 | 366 -374 | 2% |
| FY 09-10 | 374 -384 | 3% |
| FY 10-11 | 384-401 | 4% |
| FY 11-12 (thru March) | 401-427 | 6% |

Historical ADC Male and Female Inmates

| Year | Number | % Growth |
|-----------------------|-------------|----------|
| | | |
| FY 95-96 | 1733 -1908 | 10% |
| FY 96-97 | 1908 - 2119 | 11% |
| FY 97-98 | 2119 - 2267 | 7% |
| FY 98-99 | 2267 - 2424 | 7% |
| FY 99-00 | 2424 - 2518 | 4% |
| FY 00-01 | 2518 - 2590 | 3% |
| FY 01-02 | 2590 - 2781 | 7% |
| FY 02-03 | 2781 - 2954 | 6% |
| FY 03-04 | 2954 - 3059 | 4% |
| FY 04-05 | 3059 - 3144 | 3% |
| FY 05-06 | 3144 - 3428 | 9% |
| FY 06-07 | 3428 - 3378 | -1% |
| FY 07-08 | 3378 - 3344 | -1% |
| FY 08-09 | 3344 - 3387 | 1% |
| FY 09-10 | 3387 - 3450 | 2% |
| FY 10-11 | 3450 - 3434 | -0.50% |
| FY 11-12 (thru March) | 3434- 3514 | 2% |

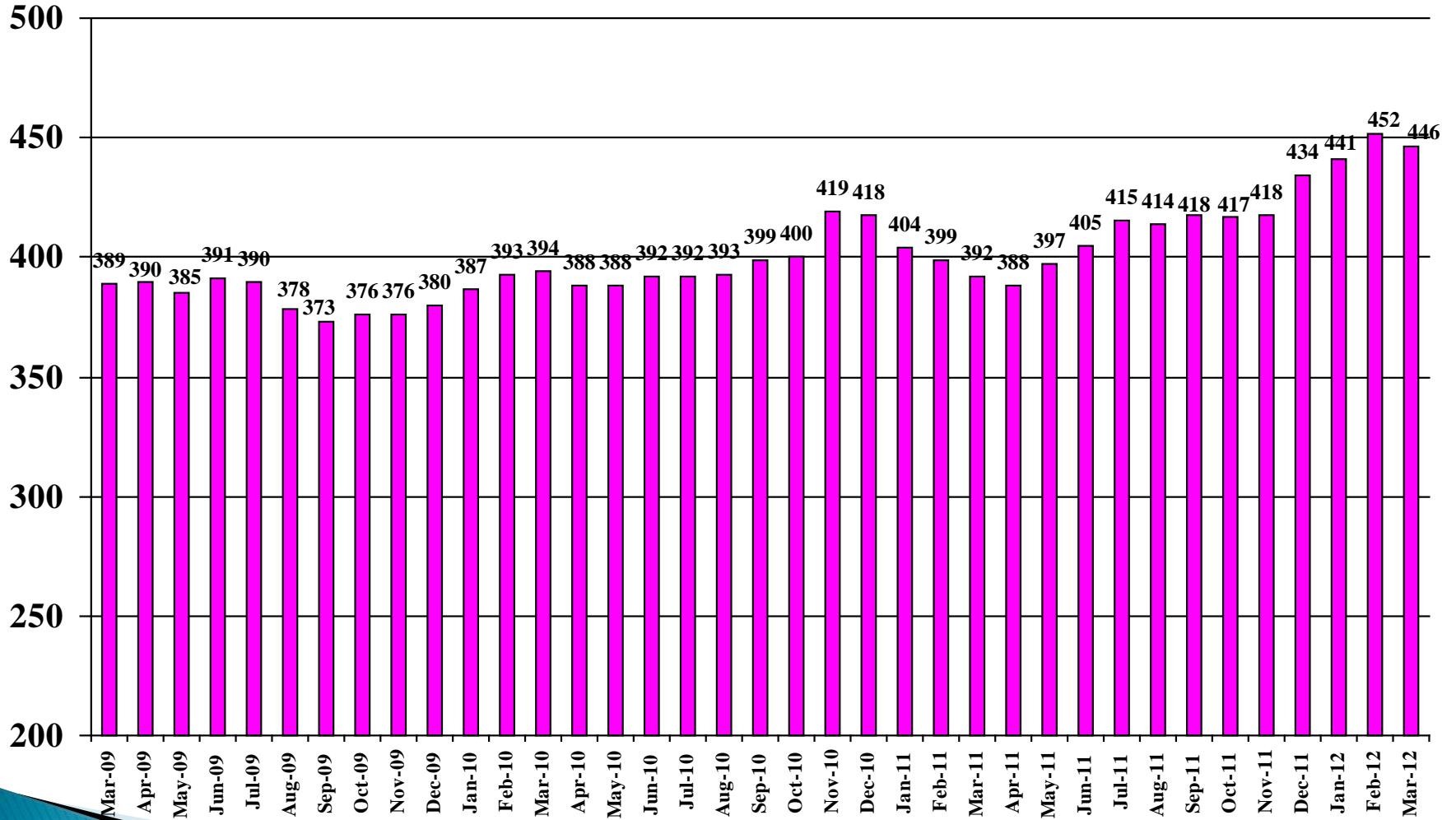
Male Inmate ADC by Month

March 2009 to March 2012



Female Inmate ADC by Month

March 2009 to March 2012



Factors contributing to prison population growth

- ▶ Increase in number of parole violators admitted to prison
 - FY 12 – Average of 63/month (56 male and 7 female)
 - FY 11 – Average of 44/month (38 male and 6 female)
 - Previous years consistent with 63/month

- ▶ Increase in the number of new court commitments for women
 - FY 12 – Average of 23/month
 - FY 11 – Average of 23/month
 - FY 10 – Average of 20/month
 - FY 09 – Average of 21/month

- ▶ **Overall – an increase in admissions by about 14 a month/165 for the year in FY 2012.**

Factors contributing to prison population growth

- ▶ Decrease in the number of discretionary parole hearings
 - Down about 13% in FY 2012 compared to FY 2011 and previous years
 - Estimate of 1,320 for FY 2012 (based on 990 through March)
 - FY 2011 discretionary parole hearings – 1,523
 - Average number last 3 years was 1,496
- ▶ Increase in number eligible for presumptive parole but decrease in number paroled
 - FY 2012 (estimated): 1,181 possible – 77% paroled
 - FY 2011: 1,107 possible – 84% paroled
 - FY 2010: 1,184 possible – 85% paroled
- ▶ Increase in number non compliant
 - FY 2012 estimate of 260 based on 195 through March.
 - FY 2011 160 and average of 163/year for the last three fiscal years (09, 10 and 11)
- ▶ Overall – estimate a decrease in releases of about 79 this year.

2010 Incarceration Rates by States

Rate/100,000 of Population

| Jurisdiction | Total | Males | Females |
|---------------|-------|-------|---------|
| United States | 437 | 823 | 59 |
| Midwest * | 389 | 735 | 53 |
| South Dakota | 416 | 732 | 100 |
| North Dakota | 226 | 394 | 55 |
| Minnesota | 185 | 347 | 24 |
| Iowa | 309 | 574 | 50 |
| Nebraska | 247 | 453 | 43 |
| Wyoming | 385 | 673 | 86 |
| Montana | 378 | 668 | 87 |

Source: U.S. Department of Justice, Prisoners in 2010

* Midwest includes Illinois, Indiana, Iowa, Kansas, Michigan, Minnesota, Nebraska, North Dakota, Ohio, South Dakota, and Wisconsin

2009 Crime Rates

Offenses Reported to Law Enforcement

Rate/100,000 of Population

| Jurisdiction | Violent Crime Rates* | Property Crime Rates** |
|---------------|----------------------|------------------------|
| United States | 439.7 | 3,071.5 |
| South Dakota | 201.0 | 1,825.2 |
| North Dakota | 223.6 | 2,008.6 |
| Minnesota | Not Available | 2,653.6 |
| Iowa | 294.5 | 2,436.4 |
| Nebraska | 305.5 | 2,878.4 |
| Wyoming | 219.3 | 2,720.2 |
| Montana | 283.9 | 2,733.1 |

Source: U.S. Census Bureau, Statistical Abstract: 2012

*Violent Crime includes murder, forcible rape, aggravated assault, and robbery.

**Property Crime includes burglary, larceny-theft, motor vehicle theft, arson

DUI and Drug Offenders

- ▶ 29% of male inmates are serving time for felony DUI or drug offenses. (919 inmates)
- ▶ 55% of female inmates are serving time for felony DUI or drug offenses. (244 inmates)
- ▶ 47% of all males admitted to prison this fiscal year are serving time for felony DUI or drug offenses.
- ▶
- ▶ 68% of all females admitted to prison this fiscal year are serving time for felony DUI or drug offenses.

Response

- ▶ Multi-pronged approach
- ▶ Continued focus on recidivism reduction
 - Of the 3,609 state inmates in SD prison just 1,615 (44.7%) are doing their first admit in SD which means 55.3% of SD inmates are recidivists.
 - 55.6% of male inmates are recidivists
 - 52.7% of female inmates are recidivists
- ▶ Drug Court and DUI Court – alternatives
- ▶ Engage partners